

LGI3 Rabbit pAb

Catalog No.: A3561

Basic Information

Observed MW

62kDa

Calculated MW

62kDa

Category

Primary antibody

Applications

WB

Cross-Reactivity

Human

Background

Predicted to enable catalytic activity. Predicted to be involved in regulation of exocytosis. Predicted to be located in extracellular region. Predicted to be active in synaptic vesicle.

Recommended Dilutions

WB 1:500 - 1:2000

Immunogen Information

Gene ID

203190

Swiss Prot

Q8N145

Immunogen

A synthetic peptide of human LGI3

Synonyms

LGIL4; IDDMDS; LGI3

Contact

 | www.abclonal.com

Product Information

Source

Rabbit

Isotype

IgG

Purification

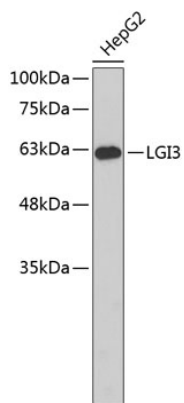
Affinity purification

Storage

Store at 4°C. Avoid freeze / thaw cycles.

Buffer: PBS with 0.02% sodium azide, pH 7.3.

Validation Data



Western blot analysis of extracts of HepG2 cells, using LGI3 antibody (A3561).
Secondary antibody: HRP Goat Anti-Rabbit IgG (H+L) (A5014) at 1:10000 dilution.
Lysates/proteins: 25µg per lane.
Blocking buffer: 3% nonfat dry milk in TBST.