

A3556

Leader in Biomolecular Solutions for Life Science



RNF168 Rabbit pAb

Catalog No.: A3556 **1 Publications**

Basic Information

Observed MW

65kDa

Calculated MW

65kDa

Category

Polyclonal Antibody

Applications

WB,ELISA

Cross-Reactivity

Human,Mouse

Background

This gene encodes an E3 ubiquitin ligase protein that contains a RING finger, a motif present in a variety of functionally distinct proteins and known to be involved in protein-DNA and protein-protein interactions. The protein is involved in DNA double-strand break (DSB) repair. Mutations in this gene result in Riddle syndrome.

Recommended Dilutions

WB 1:1000 - 1:2000

Immunogen Information

Gene ID

165918

Swiss Prot

Q8IYW5

Immunogen

Recombinant fusion protein containing a sequence corresponding to amino acids 300-571 of human RNF168 (NP_689830.2).

Synonyms

RIDL; hRNF168; RNF168

Contact



www.abclonal.com

Product Information

Source

Rabbit

Isotype

IgG

Purification

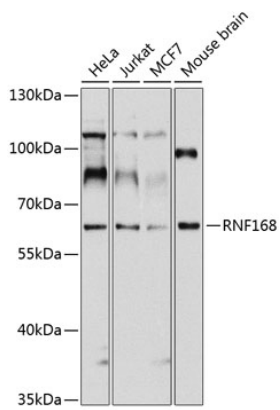
Affinity purification

Storage

Store at -20°C. Avoid freeze / thaw cycles.

Buffer: PBS with 0.02% sodium azide,50% glycerol,pH7.3.

Validation Data



Western blot analysis of extracts of various cell lines, using RNF168 antibody (A3556) at 1:1000 dilution.
Secondary antibody: HRP Goat Anti-Rabbit IgG (H+L) (AS014) at 1:10000 dilution.
Lysates/proteins: 25 μ g per lane.
Blocking buffer: 3% nonfat dry milk in TBST.
Detection: ECL Basic Kit (RM00020).
Exposure time: 10s.