

SGSM1 Rabbit pAb

Catalog No.: A3544

Basic Information

Observed MW

130kDa

Calculated MW

130kDa

Category

Primary antibody

Applications

WB

Cross-Reactivity

Human, Mouse

Background

Enables GTPase activator activity and small GTPase binding activity. Predicted to be involved in activation of GTPase activity and intracellular protein transport. Predicted to act upstream of or within positive regulation of transcription by RNA polymerase II. Located in cytoplasmic vesicle membrane and cytosol.

Recommended Dilutions

WB 1:500 - 1:1000

Immunogen Information

Gene ID

129049

Swiss Prot

Q2NKQ1

Immunogen

A synthetic peptide of human SGSM1

Synonyms

RUTBC2; SGSM1

Contact

 | www.abclonal.com

Product Information

Source

Rabbit

Isotype

IgG

Purification

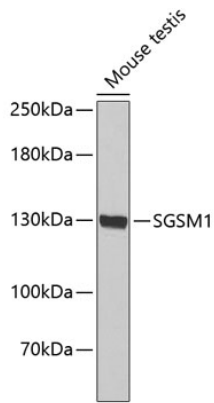
Affinity purification

Storage

Store at 4°C. Avoid freeze / thaw cycles.

Buffer: PBS with 0.02% sodium azide, pH7.3.

Validation Data



Western blot analysis of extracts of mouse testis, using SGSM1 antibody (A3544).
Secondary antibody: HRP Goat Anti-Rabbit IgG (H+L) (AS014) at 1:10000 dilution.
Lysates/proteins: 25µg per lane.
Blocking buffer: 3% nonfat dry milk in TBST.