

A3525

Leader in Biomolecular Solutions for Life Science



CHCHD6 Rabbit pAb

Catalog No.: A3525

Basic Information

Observed MW

26kDa

Calculated MW

26kDa

Category

Polyclonal Antibody

Applications

WB

Cross-Reactivity

Human

Background

Involved in cellular response to DNA damage stimulus and cristae formation. Located in cytosol and mitochondrial inner membrane. Part of MICOS complex.

Recommended Dilutions

WB 1:1000 - 1:2000

Immunogen Information

Gene ID

84303

Swiss Prot

Q9BRQ6

Immunogen

A synthetic peptide of human CHCHD6

Synonyms

CHCM1; Mic25; MICOS25; PPP1R23; CHCHD6

Contact



www.abclonal.com

Product Information

Source

Rabbit

Isotype

IgG

Purification

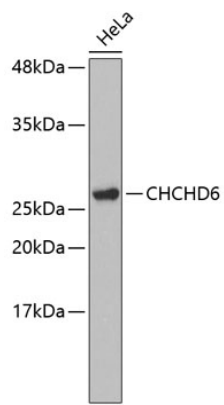
Affinity purification

Storage

Store at 4°C. Avoid freeze / thaw cycles.

Buffer: PBS with 0.02% sodium azide, pH7.3.

Validation Data



Western blot analysis of extracts of HeLa cells, using CHCHD6 antibody (A3525).
Secondary antibody: HRP Goat Anti-Rabbit IgG (H+L) (AS014) at 1:10000 dilution.
Lysates/proteins: 25µg per lane.
Blocking buffer: 3% nonfat dry milk in TBST.