

# TRAPPC13 Rabbit pAb

Catalog No.: A3511

## Basic Information

---

### Observed MW

46kDa

### Calculated MW

47kDa

### Category

Primary antibody

### Applications

WB

### Cross-Reactivity

Mouse, Rat

## Background

---

Predicted to be located in cytosol. Predicted to be part of TRAPPIII protein complex.

## Recommended Dilutions

---

WB 1:500 - 1:1000

## Immunogen Information

---

### Gene ID

80006

### Swiss Prot

A5PLN9

### Immunogen

A synthetic peptide of human TRAPPC13

### Synonyms

SHLD3; C5orf44; TRAPPC13

## Contact

---

 | [www.abclonal.com](http://www.abclonal.com)

## Product Information

---

### Source

Rabbit

### Isotype

IgG

### Purification

Affinity purification

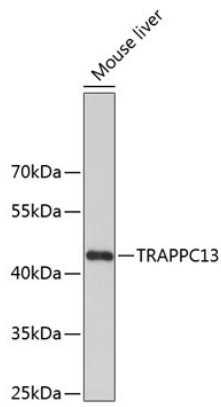
### Storage

Store at 4°C. Avoid freeze / thaw cycles.

Buffer: PBS with 0.02% sodium azide, pH7.3.

## Validation Data

---



Western blot analysis of extracts of mouse liver, using TRAPPC13 antibody (A3511).  
Secondary antibody: HRP Goat Anti-Rabbit IgG (H+L) (A5014) at 1:10000 dilution.  
Lysates/proteins: 25µg per lane.  
Blocking buffer: 3% nonfat dry milk in TBST.