

A3507

Leader in Biomolecular Solutions for Life Science



SYNPO2L Rabbit pAb

Catalog No.: A3507

Basic Information

Observed MW

71kDa

Calculated MW

102kDa

Category

Polyclonal Antibody

Applications

WB,ELISA

Cross-Reactivity

Mouse

Background

Predicted to enable actin binding activity. Predicted to be involved in several processes, including positive regulation of Rho protein signal transduction; positive regulation of stress fiber assembly; and sarcomere organization. Located in cell junction; cytosol; and nuclear speck.

Recommended Dilutions

WB 1:500 - 1:2000

Immunogen Information

Gene ID

79933

Swiss Prot

Q9H987

Immunogen

A synthetic peptide corresponding to a sequence within amino acids 700-800 of human SYNPO2L (NP_001107605.1).

Synonyms

SYNPO2L

Contact



www.abclonal.com

Product Information

Source

Rabbit

Isotype

IgG

Purification

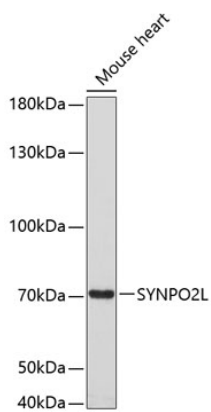
Affinity purification

Storage

Store at -20°C. Avoid freeze / thaw cycles.

Buffer: PBS with 0.01% thimerosal,50% glycerol,pH7.3.

Validation Data



Western blot analysis of lysates from mouse heart, using SYNPO2L Rabbit pAb (A3507) at 1:3000 dilution. Secondary antibody: HRP Goat Anti-Rabbit IgG (H+L) (AS014) at 1:10000 dilution. Lysates/proteins: 25µg per lane. Blocking buffer: 3% nonfat dry milk in TBST. Detection: ECL Enhanced Kit (RM00021). Exposure time: 90s.