

VIPAS39 Rabbit pAb

Catalog No.: A3479

Basic Information

Observed MW

57kDa

Calculated MW

57kDa

Category

Primary antibody

Applications

ELISA, WB

Cross-Reactivity

Human, Mouse

Background

Involved in endosome to lysosome transport and intracellular protein transport. Acts upstream of or within collagen metabolic process and peptidyl-lysine hydroxylation. Located in Golgi apparatus and endosome. Implicated in arthrogyposis, renal dysfunction, and cholestasis 2.

Recommended Dilutions

WB 1:500 - 1:2000

Immunogen Information

Gene ID

63894

Swiss Prot

Q9H9C1

Immunogen

Recombinant fusion protein containing a sequence corresponding to amino acids 1-220 of human VIPAS39 (NP_071350.2).

Synonyms

SPE39; VIPAR; SPE-39; VPS16B; hSPE-39; C14orf133; VIPAS39

Contact

 | www.abclonal.com

Product Information

Source

Rabbit

Isotype

IgG

Purification

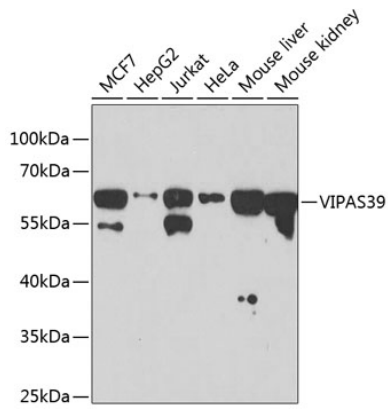
Affinity purification

Storage

Store at -20°C. Avoid freeze / thaw cycles.

Buffer: PBS with 0.02% sodium azide, 50% glycerol, pH7.3.

Validation Data



Western blot analysis of extracts of various cell lines, using VIPAS39 antibody (A3479) at 1:1000 dilution.

Secondary antibody: HRP Goat Anti-Rabbit IgG (H+L) (AS014) at 1:10000 dilution.

Lysates/proteins: 25µg per lane.

Blocking buffer: 3% nonfat dry milk in TBST.

Detection: ECL Basic Kit (RM00020).

Exposure time: 15s.