

# CREBZF Rabbit pAb

Catalog No.: A3477

## Basic Information

### Observed MW

60kDa

### Calculated MW

37kDa

### Category

Primary antibody

### Applications

ELISA, WB

### Cross-Reactivity

Human, Mouse, Rat

## Background

Enables identical protein binding activity. Involved in negative regulation of gene expression, epigenetic; regulation of transcription, DNA-templated; and response to virus. Located in mitochondrion and nucleoplasm.

## Recommended Dilutions

WB 1:500 - 1:2000

## Immunogen Information

### Gene ID

58487

### Swiss Prot

Q9NS37

### Immunogen

Recombinant fusion protein containing a sequence corresponding to amino acids 1-354 of human CREBZF (NP\_001034707.1).

### Synonyms

ZF; SMILE; CREBZF

## Contact

 | [www.abclonal.com](http://www.abclonal.com)

## Product Information

### Source

Rabbit

### Isotype

IgG

### Purification

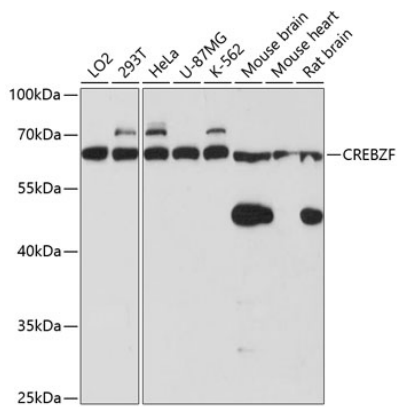
Affinity purification

### Storage

Store at -20°C. Avoid freeze / thaw cycles.

Buffer: PBS with 0.01% thimerosal, 50% glycerol, pH7.3.

# Validation Data



Western blot analysis of various lysates using CREBZF Rabbit pAb (A3477) at 1:3000 dilution. Secondary antibody: HRP Goat Anti-Rabbit IgG (H+L) (AS014) at 1:10000 dilution. Lysates/proteins: 25µg per lane. Blocking buffer: 3% nonfat dry milk in TBST. Detection: ECL Enhanced Kit (RM00021). Exposure time: 1s.