

CD248 Rabbit pAb

Catalog No.: A3469

Basic Information

Observed MW

81kDa

Calculated MW

81kDa

Category

Primary antibody

Applications

WB,FC

Cross-Reactivity

Human, Mouse

Background

Predicted to enable extracellular matrix binding activity and extracellular matrix protein binding activity. Predicted to be involved in cell migration. Predicted to act upstream of or within several processes, including anatomical structure regression; lymph node development; and positive regulation of endothelial cell apoptotic process. Located in extracellular exosome.

Recommended Dilutions

WB	1:500 - 1:2000
FC	1:20 - 1:50

Immunogen Information

Gene ID

57124

Swiss Prot

Q9HCU0

Immunogen

A synthetic peptide of human CD248

Synonyms

TEM1; CD164L1; CD248

Contact

 | www.abclonal.com

Product Information

Source

Rabbit

Isotype

IgG

Purification

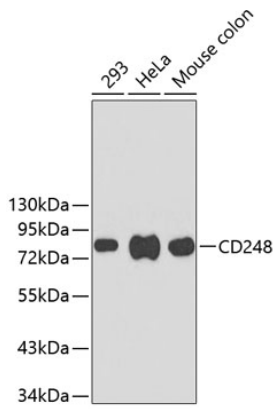
Affinity purification

Storage

Store at 4°C. Avoid freeze / thaw cycles.

Buffer: PBS with 0.02% sodium azide,pH7.3.

Validation Data



Western blot analysis of extracts of various cell lines, using CD248 antibody (A3469).
Secondary antibody: HRP Goat Anti-Rabbit IgG (H+L) (AS014) at 1:10000 dilution.
Lysates/proteins: 25µg per lane.
Blocking buffer: 3% nonfat dry milk in TBST.