

A3442

Leader in Biomolecular Solutions for Life Science



## TMED9 Rabbit pAb

Catalog No.: A3442

1 Publications

### Basic Information

#### Observed MW

27kDa

#### Calculated MW

27kDa

#### Category

Polyclonal Antibody

#### Applications

WB, ELISA

#### Cross-Reactivity

Human, Mouse, Rat

### Background

This gene is a member of a family of genes encoding transport proteins located in the endoplasmic reticulum and the Golgi. A similar gene in mouse is the target of microRNA miR-296, which is part of an imprinted cluster.

### Recommended Dilutions

WB 1:500 - 1:2000

### Immunogen Information

#### Gene ID

54732

#### Swiss Prot

Q9BVK6

#### Immunogen

Recombinant fusion protein containing a sequence corresponding to amino acids 1-224 of human TMED9 (NP\_059980.2).

#### Synonyms

p25; GMP25; p24a2; HSGP25L2G; p24alpha2; TMED9

### Contact



[www.abclonal.com](http://www.abclonal.com)

### Product Information

#### Source

Rabbit

#### Isotype

IgG

#### Purification

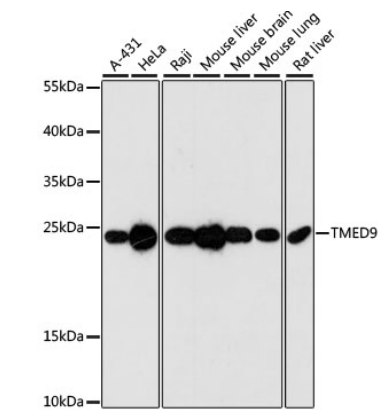
Affinity purification

#### Storage

Store at -20°C. Avoid freeze / thaw cycles.

Buffer: PBS with 0.01% thimerosal, 50% glycerol, pH 7.3.

# Validation Data



Western blot analysis of various lysates using TMED9 Rabbit pAb (A3442) at 1:3000 dilution.  
Secondary antibody: HRP Goat Anti-Rabbit IgG (H+L) (A5014) at 1:10000 dilution.  
Lysates/proteins: 25µg per lane.  
Blocking buffer: 3% nonfat dry milk in TBST.  
Detection: ECL Basic Kit (RM00020).  
Exposure time: 90s.