

C14orf166 Rabbit pAb

Catalog No.: A3436

Basic Information

Observed MW

25kDa/28kDa

Calculated MW

28kDa

Category

Primary antibody

Applications

ELISA, WB

Cross-Reactivity

Human, Mouse

Background

Enables RNA binding activity; RNA polymerase II complex binding activity; and identical protein binding activity. Involved in negative regulation of protein kinase activity; positive regulation of transcription by RNA polymerase II; and tRNA splicing, via endonucleolytic cleavage and ligation. Located in microtubule cytoskeleton; nucleoplasm; and perinuclear region of cytoplasm. Part of tRNA-splicing ligase complex.

Recommended Dilutions

WB 1:500 - 1:2000

Immunogen Information

Gene ID

51637

Swiss Prot

Q9Y224

Immunogen

Recombinant fusion protein containing a sequence corresponding to amino acids 1-244 of human C14orf166 (NP_057123.1).

Synonyms

CLE; CLE7; hCLE; CGI99; RLLM1; hCLE1; CGI-99; LCRP369; C14orf166

Contact

 | www.abclonal.com

Product Information

Source

Rabbit

Isotype

IgG

Purification

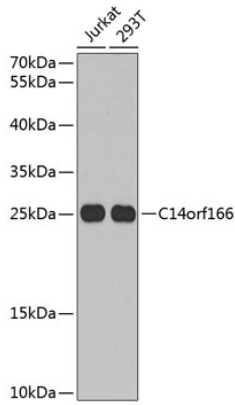
Affinity purification

Storage

Store at -20°C. Avoid freeze / thaw cycles.

Buffer: PBS with 0.02% sodium azide, 50% glycerol, pH 7.3.

Validation Data



Western blot analysis of extracts of various cell lines, using C14orf166 antibody (A3436) at 1:1000 dilution.

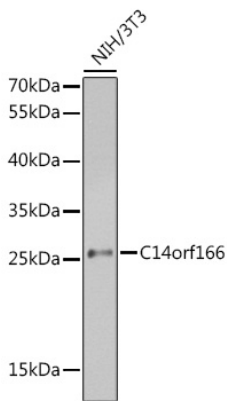
Secondary antibody: HRP Goat Anti-Rabbit IgG (H+L) (AS014) at 1:10000 dilution.

Lysates/proteins: 25µg per lane.

Blocking buffer: 3% nonfat dry milk in TBST.

Detection: ECL Basic Kit (RM00020).

Exposure time: 90s.



Western blot analysis of extracts of NIH/3T3 cells, using C14orf166 antibody (A3436) at 1:1000 dilution.

Secondary antibody: HRP Goat Anti-Rabbit IgG (H+L) (AS014) at 1:10000 dilution.

Lysates/proteins: 25µg per lane.

Blocking buffer: 3% nonfat dry milk in TBST.

Detection: ECL Enhanced Kit (RM00021).

Exposure time: 45s.