

CYP2S1 Rabbit pAb

Catalog No.: A3425

Basic Information

Observed MW

48kDa

Calculated MW

56kDa

Category

Primary antibody

Applications

WB,IF/ICC

Cross-Reactivity

Human, Mouse

Background

This gene encodes a member of the cytochrome P450 superfamily of enzymes. The cytochrome P450 proteins are monooxygenases which catalyze many reactions involved in drug metabolism and synthesis of cholesterol, steroids and other lipids. This protein localizes to the endoplasmic reticulum. In rodents, the homologous protein has been shown to metabolize certain carcinogens; however, the specific function of the human protein has not been determined.

Recommended Dilutions

WB 1:1000 - 1:2000

IF/ICC 1:20 - 1:50

Immunogen Information

Gene ID

29785

Swiss Prot

Q96SQ9

Immunogen

A synthetic peptide of human CYP2S1

Synonyms

CYP11S1; CYP2S1

Contact

 | www.abclonal.com

Product Information

Source

Rabbit

Isotype

IgG

Purification

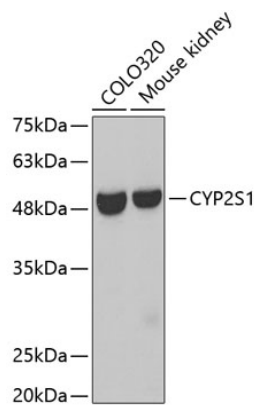
Affinity purification

Storage

Store at 4°C. Avoid freeze / thaw cycles.

Buffer: PBS with 0.02% sodium azide,pH7.3.

Validation Data



Western blot analysis of extracts of various cell lines, using CYP2S1 antibody (A3425).
Secondary antibody: HRP Goat Anti-Rabbit IgG (H+L) (A5014) at 1:10000 dilution.
Lysates/proteins: 25µg per lane.
Blocking buffer: 3% nonfat dry milk in TBST.