

# SAMM50 Rabbit pAb

Catalog No.: A3401

## Basic Information

### Observed MW

55kDa

### Calculated MW

52kDa

### Category

Primary antibody

### Applications

ELISA, WB, IHC-P, IP

### Cross-Reactivity

Human, Mouse, Rat

## Background

This gene encodes a component of the Sorting and Assembly Machinery (SAM) of the mitochondrial outer membrane. The Sam complex functions in the assembly of beta-barrel proteins into the outer mitochondrial membrane.

## Recommended Dilutions

**WB** 1:500 - 1:2000

**IHC-P** 1:50 - 1:200

**IP** 0.5µg-4µg antibody for  
400µg-600µg extracts of  
whole cells

## Immunogen Information

### Gene ID

25813

### Swiss Prot

Q9Y512

### Immunogen

Recombinant fusion protein containing a sequence corresponding to amino acids 1-220 of human SAMM50 (NP\_056195.3).

### Synonyms

OMP85; SAM50; TOB55; TRG-3; CGI-51; YNL026W; SAMM50

## Contact

 | [www.abclonal.com](http://www.abclonal.com)

## Product Information

### Source

Rabbit

### Isotype

IgG

### Purification

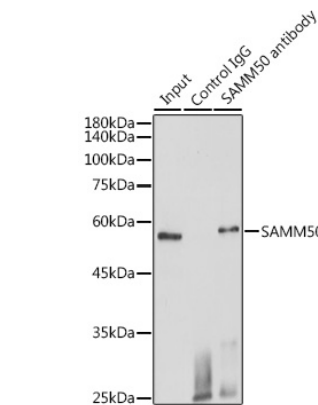
Affinity purification

### Storage

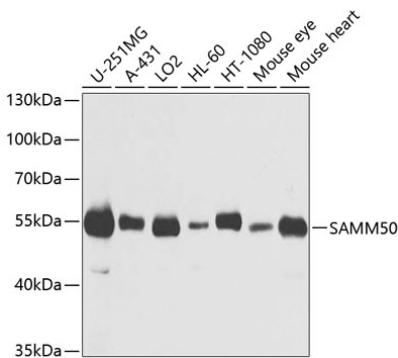
Store at -20°C. Avoid freeze / thaw cycles.

Buffer: PBS with 0.02% sodium azide, 50% glycerol, pH7.3.

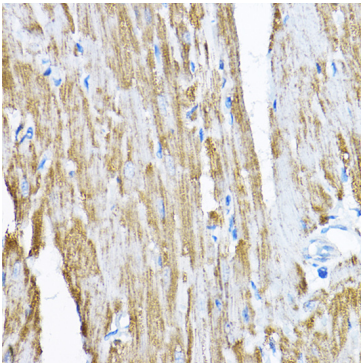
Validation Data



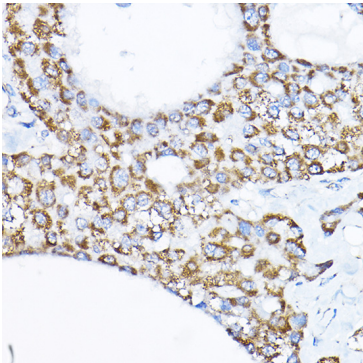
Immunoprecipitation analysis of 600 µg extracts of Mouse heart cells using 3 µg SAMM50 antibody (A3401). Western blot was performed from the immunoprecipitate using SAMM50 antibody (A3401) at a dilution of 1:1000.



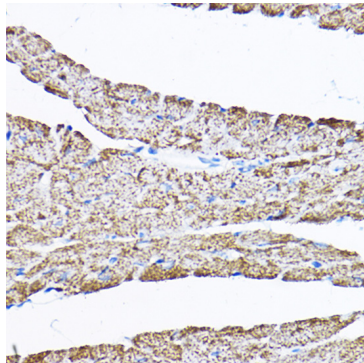
Western blot analysis of various lysates using SAMM50 Rabbit pAb (A3401) at 1:1000 dilution. Secondary antibody: HRP Goat Anti-Rabbit IgG (H+L) (AS014) at 1:10000 dilution. Lysates/proteins: 25µg per lane. Blocking buffer: 3% nonfat dry milk in TBST. Detection: ECL Basic Kit (RM00020). Exposure time: 30s.



Immunohistochemistry analysis of SAMM50 in paraffin-embedded rat heart using SAMM50 Rabbit pAb (A3401) at dilution of 1:200 (40x lens).Perform high pressure antigen retrieval with 10 mM citrate buffer pH 6.0 before commencing with IHC staining protocol.



Immunohistochemistry analysis of SAMM50 in paraffin-embedded human liver cancer using SAMM50 Rabbit pAb (A3401) at dilution of 1:200 (40x lens).Perform high pressure antigen retrieval with 10 mM citrate buffer pH 6.0 before commencing with IHC staining protocol.



Immunohistochemistry analysis of SAMM50 in paraffin-embedded mouse heart using SAMM50 Rabbit pAb (A3401) at dilution of 1:200 (40x lens).Perform high pressure antigen retrieval with 10 mM citrate buffer pH 6.0 before commencing with IHC staining protocol.