

POLA2 Rabbit pAb

Catalog No.: A3400

Basic Information

Observed MW

70kDa

Calculated MW

66kDa

Category

Primary antibody

Applications

ELISA, WB

Cross-Reactivity

Human, Mouse, Rat

Background

Predicted to enable DNA binding activity. Involved in DNA replication, synthesis of RNA primer. Located in cytosol and nucleoplasm. Part of alpha DNA polymerase:primase complex.

Recommended Dilutions

WB 1:1000 - 1:3000

Immunogen Information

Gene ID

23649

Swiss Prot

Q14181

Immunogen

Recombinant fusion protein containing a sequence corresponding to amino acids 1-250 of human POLA2 (NP_002680.2).

Synonyms

POLA2

Contact

 | www.abclonal.com

Product Information

Source

Rabbit

Isotype

IgG

Purification

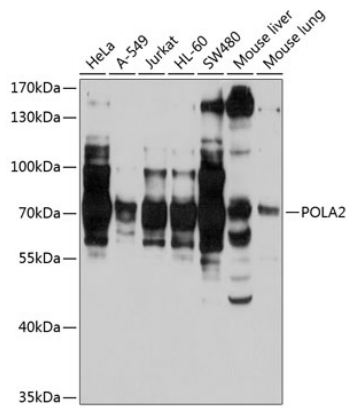
Affinity purification

Storage

Store at -20°C. Avoid freeze / thaw cycles.

Buffer: PBS with 0.02% sodium azide, 50% glycerol, pH 7.3.

Validation Data



Western blot analysis of extracts of various cell lines, using POLA2 antibody (A3400) at 1:1000 dilution.

Secondary antibody: HRP Goat Anti-Rabbit IgG (H+L) (AS014) at 1:10000 dilution.

Lysates/proteins: 25µg per lane.

Blocking buffer: 3% nonfat dry milk in TBST.

Detection: ECL Basic Kit (RM00020).

Exposure time: 30s.