

SV2C Rabbit pAb

Catalog No.: A3388

Basic Information

Observed MW

60kDa

Calculated MW

82kDa

Category

Primary antibody

Applications

WB

Cross-Reactivity

Mouse, Rat

Background

Predicted to enable transmembrane transporter activity. Predicted to be involved in chemical synaptic transmission; neurotransmitter transport; and transmembrane transport. Predicted to be located in plasma membrane and synaptic vesicle. Predicted to be active in neuron projection and synaptic vesicle membrane. Predicted to be integral component of synaptic vesicle membrane.

Recommended Dilutions

WB 1:500 - 1:2000

Immunogen Information

Gene ID

22987

Swiss Prot

Q496J9

Immunogen

A synthetic peptide of human SV2C

Synonyms

SLC22B3; SV2C

Contact

 | www.abclonal.com

Product Information

Source

Rabbit

Isotype

IgG

Purification

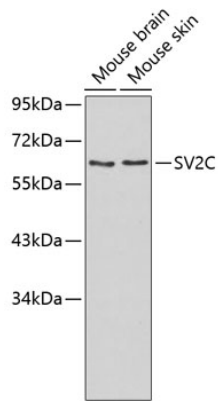
Affinity purification

Storage

Store at 4°C. Avoid freeze / thaw cycles.

Buffer: PBS with 0.02% sodium azide, pH7.3.

Validation Data



Western blot analysis of extracts of various cell lines, using SV2C antibody (A3388).
Secondary antibody: HRP Goat Anti-Rabbit IgG (H+L) (AS014) at 1:10000 dilution.
Lysates/proteins: 25 μ g per lane.
Blocking buffer: 3% nonfat dry milk in TBST.