

# BTN2A1 Rabbit pAb

Catalog No.: A3377

## Basic Information

---

**Observed MW**

70kDa

**Calculated MW**

60kDa

**Category**

Primary antibody

**Applications**

WB

**Cross-Reactivity**

Human

## Background

---

This gene encodes a member of the immunoglobulin superfamily. The gene is located in a cluster of butyrophilin-like genes in the juxta-telomeric region of the major histocompatibility complex on chromosome 6. A pseudogene of this gene has been identified in this cluster. The encoded protein is an integral plasma membrane protein involved in lipid, fatty-acid, and sterol metabolism. Alterations in this gene may be associated with several disease states including metabolic syndrome. Multiple alternatively spliced transcript variants encoding different isoforms have been found for this gene.

## Recommended Dilutions

---

WB 1:500 - 1:2000

## Immunogen Information

---

**Gene ID**

11120

**Swiss Prot**

Q7KYR7

**Immunogen**

A synthetic peptide of human BTN2A1

**Synonyms**

BTF1; BT2.1; BTN2.1; DJ3E1.1; BK14H9.1; BTN2A1

## Contact

---

 | [www.abclonal.com](http://www.abclonal.com)

## Product Information

---

**Source**

Rabbit

**Isotype**

IgG

**Purification**

Affinity purification

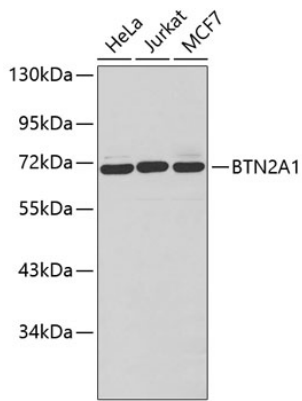
**Storage**

Store at 4°C. Avoid freeze / thaw cycles.

Buffer: PBS with 0.02% sodium azide, pH7.3.

## Validation Data

---



Western blot analysis of extracts of various cell lines, using BTN2A1 antibody (A3377).  
Secondary antibody: HRP Goat Anti-Rabbit IgG (H+L) (AS014) at 1:10000 dilution.  
Lysates/proteins: 25µg per lane.  
Blocking buffer: 3% nonfat dry milk in TBST.