

UBE4A Rabbit pAb

Catalog No.: A3354

Basic Information

Observed MW

123kDa

Calculated MW

123kDa

Category

Primary antibody

Applications

ELISA, WB, IHC-P

Cross-Reactivity

Human, Mouse, Rat

Background

This gene encodes a member of the U-box ubiquitin ligase family. The encoded protein is involved in multiubiquitin chain assembly and plays a critical role in chromosome condensation and separation through the polyubiquitination of securin. Autoantibodies against the encoded protein may be markers for scleroderma and Crohn's disease. A pseudogene of this gene is located on the long arm of chromosome 3. Alternatively spliced transcript variants encoding multiple isoforms have been observed for this gene.

Recommended Dilutions

WB	1:1000 - 1:5000
IHC-P	1:50 - 1:200

Immunogen Information

Gene ID

9354

Swiss Prot

Q14139

Immunogen

Recombinant fusion protein containing a sequence corresponding to amino acids 797-1066 of human UBE4A (NP_001191006.1).

Synonyms

E4; UFD2; UBOX2; NEDHMS; UBE4A

Contact

 | www.abclonal.com

Product Information

Source

Rabbit

Isotype

IgG

Purification

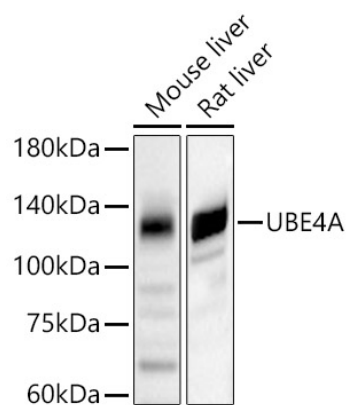
Affinity purification

Storage

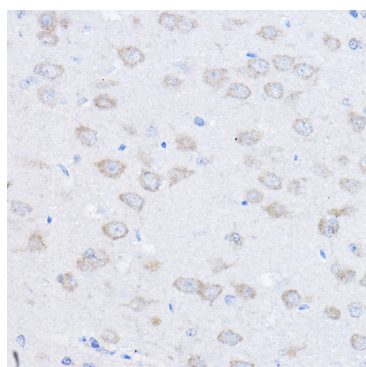
Store at -20°C. Avoid freeze / thaw cycles.

Buffer: PBS with 0.02% sodium azide, 50% glycerol, pH7.3.

Validation Data



Western blot analysis of various lysates, using UBE4A antibody (A3354) at 1:3000 dilution.
Secondary antibody: HRP Goat Anti-Rabbit IgG (H+L) (A5014) at 1:10000 dilution.
Lysates/proteins: 25µg per lane.
Blocking buffer: 3% nonfat dry milk in TBST.
Detection: ECL Basic Kit (RM00020).
Exposure time: 60s.



Immunohistochemistry analysis of paraffin-embedded rat brain using UBE4A Rabbit pAb (A3354) at dilution of 1:100 (40x lens). Perform high pressure antigen retrieval with 10 mM citrate buffer pH 6.0 before commencing with IHC staining protocol.