

# Gemin 2 Rabbit pAb

Catalog No.: A3344

## Basic Information

---

### Observed MW

31kDa

### Calculated MW

32kDa

### Category

Primary antibody

### Applications

WB

### Cross-Reactivity

Human, Mouse

## Background

---

This gene encodes one of the proteins found in the SMN complex, which consists of several gemin proteins and the protein known as the survival of motor neuron protein. The SMN complex is localized to a subnuclear compartment called gems (gemini of coiled bodies) and is required for assembly of spliceosomal snRNPs and for pre-mRNA splicing. This protein interacts directly with the survival of motor neuron protein and it is required for formation of the SMN complex. A knockout mouse targeting the mouse homolog of this gene exhibited disrupted snRNP assembly and motor neuron degeneration.

## Recommended Dilutions

---

WB 1:500 - 1:1000

## Immunogen Information

---

### Gene ID

8487

### Swiss Prot

O14893

### Immunogen

A synthetic peptide of human Gemin 2

### Synonyms

SIP1; SIP1-delta; Gemin 2

## Contact

---

 | [www.abclonal.com](http://www.abclonal.com)

## Product Information

---

### Source

Rabbit

### Isotype

IgG

### Purification

Affinity purification

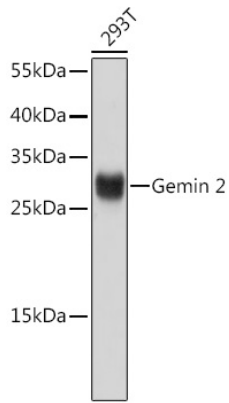
### Storage

Store at 4°C. Avoid freeze / thaw cycles.

Buffer: PBS with 0.02% sodium azide, pH7.3.

## Validation Data

---



Western blot analysis of extracts of 293T cells, using Gemin 2 antibody (A3344).  
Secondary antibody: HRP Goat Anti-Rabbit IgG (H+L) (AS014) at 1:10000 dilution.  
Lysates/proteins: 25µg per lane.  
Blocking buffer: 3% nonfat dry milk in TBST.