

SSTR1 Rabbit pAb

Catalog No.: A3332

Basic Information

Observed MW

55kDa

Calculated MW

43kDa

Category

Primary antibody

Applications

WB

Cross-Reactivity

Human, Mouse

Background

Somatostatins are peptide hormones that regulate diverse cellular functions such as neurotransmission, cell proliferation, and endocrine signaling as well as inhibiting the release of many hormones and other secretory proteins. Somatostatin has two active forms of 14 and 28 amino acids. The biological effects of somatostatins are mediated by a family of G-protein coupled somatostatin receptors that are expressed in a tissue-specific manner. The protein encoded by this gene is a member of the superfamily of somatostatin receptors having seven transmembrane segments. Somatostatin receptors form homodimers and heterodimers with other members of the superfamily as well as with other G-protein coupled receptors and receptor tyrosine kinases. This somatostatin receptor has greater affinity for somatostatin-14 than -28.

Recommended Dilutions

WB 1:500 - 1:2000

Immunogen Information

Gene ID

6751

Swiss Prot

P30872

Immunogen

A synthetic peptide of human SSTR1

Synonyms

SS1R; SST1; SS1-R; SRIF-2; SS-1-R; SSTR1

Contact

 | www.abclonal.com

Product Information

Source

Rabbit

Isotype

IgG

Purification

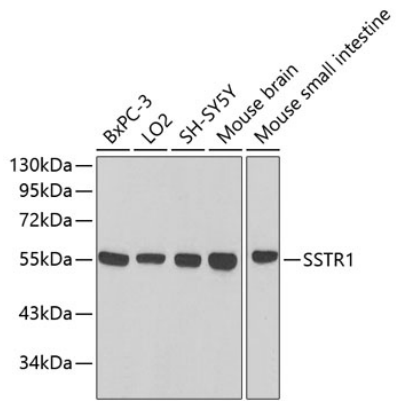
Affinity purification

Storage

Store at 4°C. Avoid freeze / thaw cycles.

Buffer: PBS with 0.02% sodium azide, pH7.3.

Validation Data



Western blot analysis of extracts of various cell lines, using SSTR1 antibody (A3332).
Secondary antibody: HRP Goat Anti-Rabbit IgG (H+L) (AS014) at 1:10000 dilution.
Lysates/proteins: 25µg per lane.
Blocking buffer: 3% nonfat dry milk in TBST.