

A3247

Leader in Biomolecular Solutions for Life Science



## [KO Validated] SMARCB1/SNF5 Rabbit mAb

Catalog No.: A3247 **KO Validated** **Recombinant**

### Basic Information

#### Observed MW

44kDa

#### Calculated MW

44kDa

#### Category

SMab Recombinant Monoclonal  
Antibody

#### Applications

WB,IHC-P,ELISA

#### Cross-Reactivity

Human,Mouse,Rat

#### CloneNo number

ARC53139

### Background

The protein encoded by this gene is part of a complex that relieves repressive chromatin structures, allowing the transcriptional machinery to access its targets more effectively. The encoded nuclear protein may also bind to and enhance the DNA joining activity of HIV-1 integrase. This gene has been found to be a tumor suppressor, and mutations in it have been associated with malignant rhabdoid tumors. Alternatively spliced transcript variants have been found for this gene.

### Recommended Dilutions

**WB** 1:1000 - 1:5000

**IHC-P** 1:50 - 1:200

### Immunogen Information

#### Gene ID

6598

#### Swiss Prot

Q12824

#### Immunogen

A synthetic peptide corresponding to a sequence within amino acids 50-150 of human SMARCB1/SNF5 (NP\_003064.2).

#### Synonyms

RDT; CSS3; INI1; SNF5; Snr1; BAF47; INI-1; MRD15; RTPS1; Sfh1p; hSNFS; SNF5L1; SWNTS1; PPP1R144; F5

### Contact

 [www.abclonal.com](http://www.abclonal.com)

### Product Information

#### Source

Rabbit

#### Isotype

IgG

#### Purification

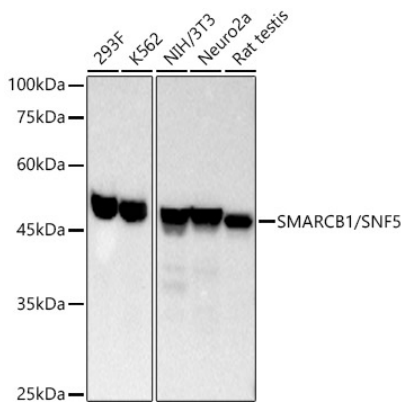
Affinity purification

#### Storage

Store at -20°C. Avoid freeze / thaw cycles.

Buffer: PBS with 0.05% proclin300,0.05% BSA,50% glycerol,pH7.3.

## Validation Data



Western blot analysis of various lysates, using SMARCB1/SNF5 Rabbit mAb (A3247) at 1:2000 dilution.

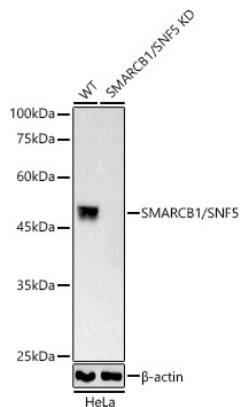
Secondary antibody: HRP Goat Anti-Rabbit IgG (H+L) (AS014) at 1:2000 dilution.

Lysates/proteins: 25µg per lane.

Blocking buffer: 3% nonfat dry milk in TBST.

Detection: ECL Basic Kit (RM00020).

Exposure time: 10s.



Western blot analysis of lysates from wild type (WT) and SMARCB1/SNF5 Rabbit mAb knockout (KO) HeLa (KO) cells, using SMARCB1/SNF5 Rabbit mAb (A3247) at 1:2000 dilution.

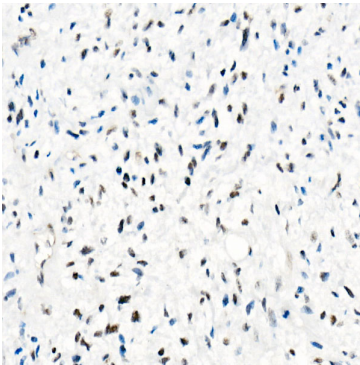
Secondary antibody: HRP Goat Anti-Rabbit IgG (H+L) (AS014) at 1:10000 dilution.

Lysates/proteins: 25µg per lane.

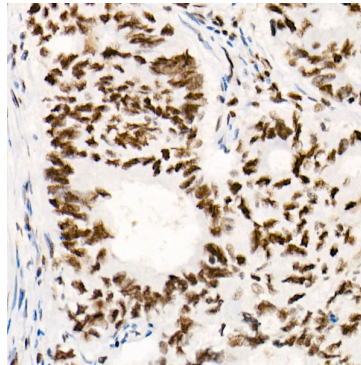
Blocking buffer: 3% nonfat dry milk in TBST.

Detection: ECL Basic Kit (RM00020).

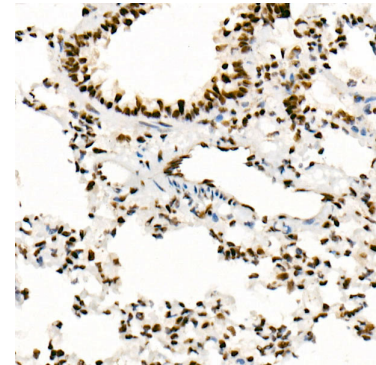
Exposure time: 10s.



Immunohistochemistry analysis of paraffin-embedded Human epithelioid sarcoma (ini-1 deletion) using [KO Validated] SMARCB1/SNF5 Rabbit mAb (A3247) at dilution of 1:100(40x lens). Perform high pressure antigen retrieval with 10 mM Tris/EDTA buffer pH 9.0 before commencing with IHC staining protocol.



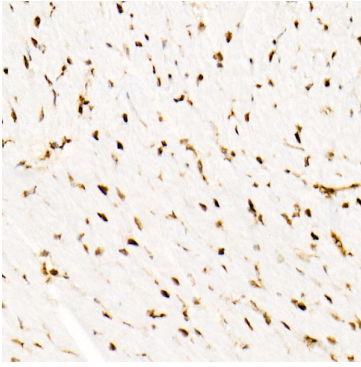
Immunohistochemistry analysis of paraffin-embedded Human colon carcinoma using [KO Validated] SMARCB1/SNF5 Rabbit mAb (A3247) at dilution of 1:100(40x lens). Perform high pressure antigen retrieval with 10 mM Tris/EDTA buffer pH 9.0 before commencing with IHC staining protocol.



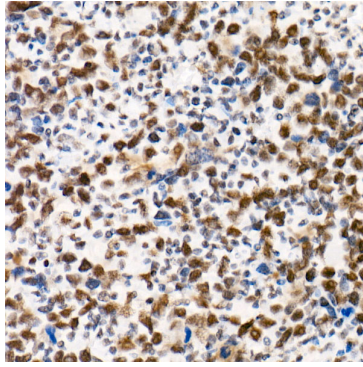
Immunohistochemistry analysis of paraffin-embedded Rat lung using [KO Validated] SMARCB1/SNF5 Rabbit mAb (A3247) at dilution of 1:100(40x lens). Perform high pressure antigen retrieval with 10 mM Tris/EDTA buffer pH 9.0 before commencing with IHC staining protocol.

## Validation Data

---



Immunohistochemistry analysis of paraffin-embedded Mouse heart using [KO Validated] SMARCB1/SNF5 Rabbit mAb (A3247) at dilution of 1:100(40x lens). Perform high pressure antigen retrieval with 10 mM Tris/EDTA buffer pH 9.0 before commencing with IHC staining protocol.



Immunohistochemistry analysis of paraffin-embedded Human undifferentiated carcinoma of esophagus using [KO Validated] SMARCB1/SNF5 Rabbit mAb (A3247) at dilution of 1:100(40x lens). Perform high pressure antigen retrieval with 10 mM Tris/EDTA buffer pH 9.0 before commencing with IHC staining protocol.