

# MAP1S Rabbit pAb

Catalog No.: A3224

## Basic Information

### Observed MW

120kDa

### Calculated MW

112kDa

### Category

Primary antibody

### Applications

WB,FC

### Cross-Reactivity

Human

## Background

Enables DNA binding activity and cytoskeletal protein binding activity. Involved in microtubule bundle formation; neuron projection morphogenesis; and regulation of chromatin disassembly. Located in several cellular components, including microtubule cytoskeleton; nuclear lumen; and perinuclear region of cytoplasm.

## Recommended Dilutions

<b>WB</b>	1:500 - 1:1000
<b>FC</b>	1:20 - 1:50

## Immunogen Information

<b>Gene ID</b>	<b>Swiss Prot</b>
55201	Q66K74

### Immunogen

A synthetic peptide of human MAP1S

### Synonyms

MAP8; BPY2IP1; C19orf5; VCY2IP1; VCY2IP-1; MAP1S

## Contact

 | [www.abclonal.com](http://www.abclonal.com)

## Product Information

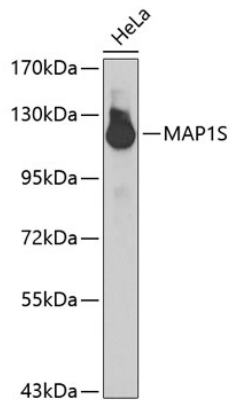
<b>Source</b>	<b>Isotype</b>	<b>Purification</b>
Rabbit	IgG	Affinity purification

### Storage

Store at 4°C. Avoid freeze / thaw cycles.  
Buffer: PBS with 0.02% sodium azide,pH7.3.

## Validation Data

---



Western blot analysis of extracts of HeLa cells, using MAP1S antibody (A3224).  
Secondary antibody: HRP Goat Anti-Rabbit IgG (H+L) (AS014) at 1:10000 dilution.  
Lysates/proteins: 25µg per lane.  
Blocking buffer: 3% nonfat dry milk in TBST.