

SETD2 Rabbit pAb

Catalog No.: A3194 **16 Publications**

Basic Information

Observed MW
288kDa

Calculated MW
288kDa

Category
Primary antibody

Applications
ELISA, WB, IF/ICC, IP

Cross-Reactivity
Human, Mouse, Rat

Background

Huntington's disease (HD), a neurodegenerative disorder characterized by loss of striatal neurons, is caused by an expansion of a polyglutamine tract in the HD protein huntingtin. This gene encodes a protein belonging to a class of huntingtin interacting proteins characterized by WW motifs. This protein is a histone methyltransferase that is specific for lysine-36 of histone H3, and methylation of this residue is associated with active chromatin. This protein also contains a novel transcriptional activation domain and has been found associated with hyperphosphorylated RNA polymerase II.

Recommended Dilutions

WB	1:500 - 1:1000
IF/ICC	1:50 - 1:200
IP	0.5µg-4µg antibody for 400µg-600µg extracts of whole cells

Immunogen Information

Gene ID	Swiss Prot
29072	Q9BYW2


Immunogen

A synthetic peptide corresponding to a sequence within amino acids 2475-2564 of human SETD2 (NP_054878.5).

Synonyms

LLS; HYPB; SET2; HIF-1; HIP-1; KMT3A; MRD70; RAPAS; HBP231; HSPC069; p231HBP; SETD2

Contact

 | www.abclonal.com

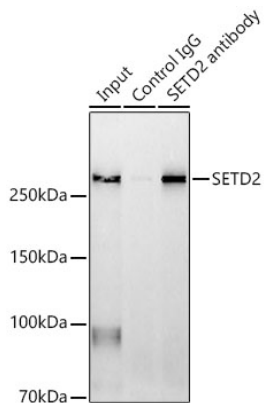
Product Information

Source	Isotype	Purification
Rabbit	IgG	Affinity purification

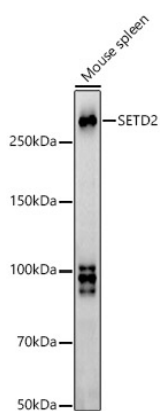
Storage

Store at -20°C. Avoid freeze / thaw cycles.
Buffer: PBS with 0.05% proclin300, 50% glycerol, pH7.3.

Validation Data



Immunoprecipitation analysis of 600 µg extracts of Mouse spleen using 3 µg SETD2 antibody (A3194). Western blot was performed from the immunoprecipitate using SETD2 antibody (A3194) at a dilution of 1:1000.



Western blot analysis of lysates from Mouse spleen, using SETD2 Rabbit pAb (A3194) at 1:900 dilution.

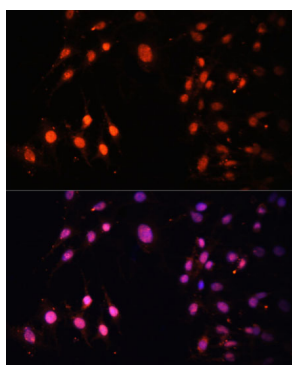
Secondary antibody: HRP Goat Anti-Rabbit IgG (H+L) (AS014) at 1:10000 dilution.

Lysates/proteins: 25µg per lane.

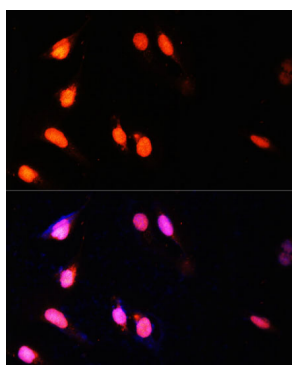
Blocking buffer: 3% nonfat dry milk in TBST.

Detection: ECL Basic Kit (RM00020).

Exposure time: 90s.



Immunofluorescence analysis of C6 cells using SETD2 Rabbit pAb (A3194) at dilution of 1:100 (40x lens). Secondary antibody: Cy3 Goat Anti-Rabbit IgG (H+L) (AS007) at 1:500 dilution. Blue: DAPI for nuclear staining.



Immunofluorescence analysis of U-2 OS cells using SETD2 Rabbit pAb (A3194) at dilution of 1:100 (40x lens). Secondary antibody: Cy3 Goat Anti-Rabbit IgG (H+L) (AS007) at 1:500 dilution. Blue: DAPI for nuclear staining.