

PELP1 Rabbit pAb

Catalog No.: A3189 **1 Publications**

Basic Information

Observed MW

160kDa

Calculated MW

125kDa

Category

Primary antibody

Applications

ELISA, WB, IHC-P, IF/ICC

Cross-Reactivity

Human, Mouse, Rat

Background

This gene encodes a transcription factor which coactivates transcription of estrogen receptor responsive genes and corepresses genes activated by other hormone receptors or sequence-specific transcription factors. Expression of this gene is regulated by both members of the estrogen receptor family. This gene may be involved in the progression of several types of cancer. Alternative splicing results in multiple transcript variants.

Recommended Dilutions

WB	1:500 - 1:2000
IHC-P	1:50 - 1:100
IF/ICC	1:50 - 1:100

Immunogen Information

Gene ID	Swiss Prot
27043	C9JFV4

Immunogen

Recombinant fusion protein containing a sequence corresponding to amino acids 1021-1180 of human PELP1 (NP_055204.3).

Synonyms

MNAR; P160; PELP1

Contact

 | www.abclonal.com

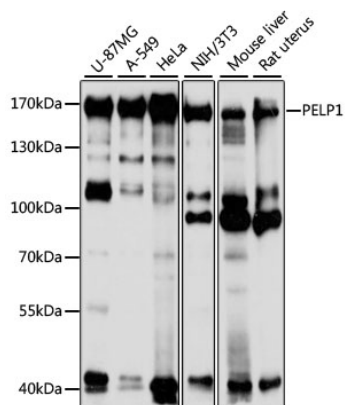
Product Information

Source	Isotype	Purification
Rabbit	IgG	Affinity purification

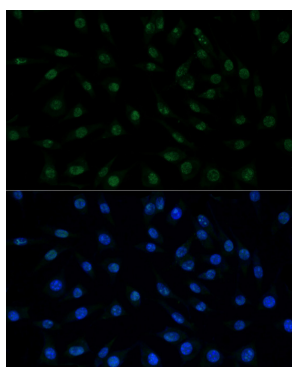
Storage

Store at -20°C. Avoid freeze / thaw cycles.
Buffer: PBS with 0.01% thimerosal, 50% glycerol, pH7.3.

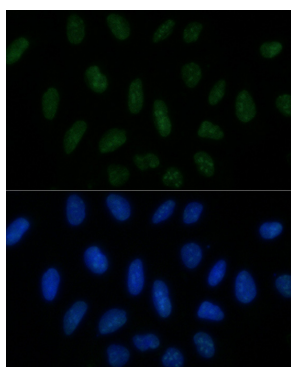
Validation Data



Western blot analysis of various lysates using PELP1 Rabbit pAb (A3189) at 1:1000 dilution. Secondary antibody: HRP Goat Anti-Rabbit IgG (H+L) (AS014) at 1:10000 dilution. Lysates/proteins: 25µg per lane. Blocking buffer: 3% nonfat dry milk in TBST. Detection: ECL Basic Kit (RM00020). Exposure time: 10s.



Immunofluorescence analysis of L929 cells using PELP1 Rabbit pAb (A3189) at dilution of 100 (40x lens). Secondary antibody: Cy3 Goat Anti-Rabbit IgG (H+L) (AS007) at 1:500 dilution. Blue: DAPI for nuclear staining.



Immunofluorescence analysis of U2OS cells using PELP1 Rabbit pAb (A3189) at dilution of 100 (40x lens). Secondary antibody: Cy3 Goat Anti-Rabbit IgG (H+L) (AS007) at 1:500 dilution. Blue: DAPI for nuclear staining.