

# MonoMethyl-Histone H3-R8 Rabbit pAb

Catalog No.: A3156

## Basic Information

### Observed MW

17kDa

### Calculated MW

15kDa

### Category

Primary antibody

### Applications

WB,IHC,IF/ICC,IP,ChIP,ChIP-seq

### Cross-Reactivity

Human, Mouse, Rat, Other (Wide Range)

## Recommended Dilutions

|                 |               |
|-----------------|---------------|
| <b>WB</b>       | 1:100 - 1:500 |
| <b>IHC</b>      | 1:50 - 1:200  |
| <b>IF/ICC</b>   | 1:50 - 1:200  |
| <b>IP</b>       | 1:50 - 1:200  |
| <b>ChIP</b>     | 1:20 - 1:100  |
| <b>ChIP-seq</b> | 1:20 - 1:100  |

## Contact

 | [www.abclonal.com](http://www.abclonal.com)

## Background

Histones are basic nuclear proteins that are responsible for the nucleosome structure of the chromosomal fiber in eukaryotes. Nucleosomes consist of approximately 146 bp of DNA wrapped around a histone octamer composed of pairs of each of the four core histones (H2A, H2B, H3, and H4). The chromatin fiber is further compacted through the interaction of a linker histone, H1, with the DNA between the nucleosomes to form higher order chromatin structures. This gene is intronless and encodes a replication-dependent histone that is a member of the histone H3 family. Transcripts from this gene lack polyA tails; instead, they contain a palindromic termination element. This gene is located separately from the other H3 genes that are in the histone gene cluster on chromosome 6p22-p21.3.

## Immunogen Information

|                |                   |
|----------------|-------------------|
| <b>Gene ID</b> | <b>Swiss Prot</b> |
| 8290           | Q16695            |

### Immunogen

A synthetic monomethylated peptide around R8 of human histone H3 (NP\_003520.1).

### Synonyms

H3.4;H3/g;H3FT;H3t;HIST3H3;Histone H3;HIST1H3A

## Product Information

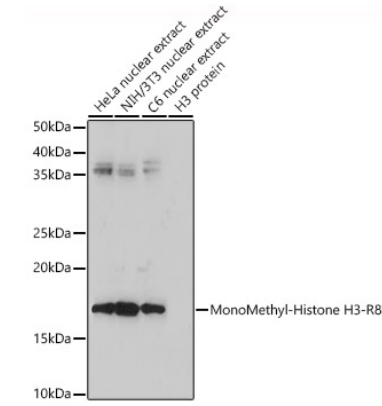
|               |                |                       |
|---------------|----------------|-----------------------|
| <b>Source</b> | <b>Isotype</b> | <b>Purification</b>   |
| Rabbit        | IgG            | Affinity purification |

### Storage

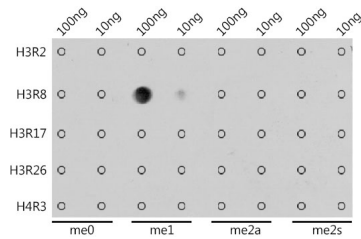
Store at -20°C. Avoid freeze / thaw cycles.

Buffer: PBS with 0.01% thiomersal,50% glycerol,pH7.3.

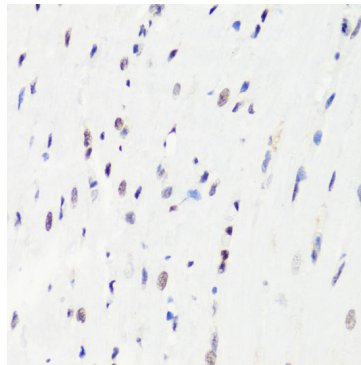
## Validation Data



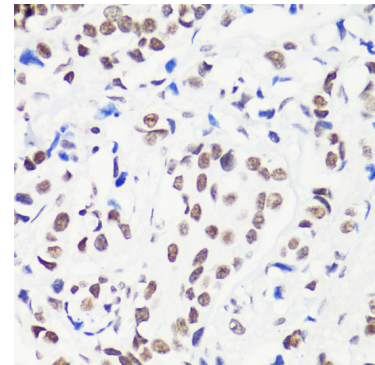
Western blot analysis of extracts of various cell lines, using MonoMethyl-Histone H3-R8 antibody (A3156) at 1:500 dilution.  
 Secondary antibody: HRP Goat Anti-Rabbit IgG (H+L) (AS014) at 1:10000 dilution.  
 Lysates/proteins: 25ug per lane.  
 Blocking buffer: 3% nonfat dry milk in TBST.  
 Detection: ECL Enhanced Kit (RM00021).  
 Exposure time: 180s.



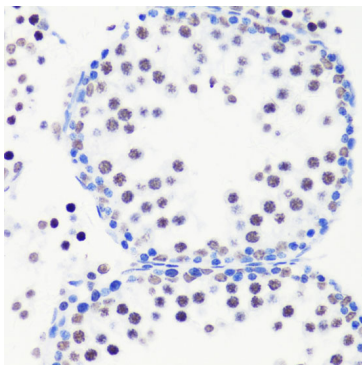
Dot-blot analysis of all sorts of methylation peptides using MonoMethyl-Histone H3-R8 antibody (A3156) at 1:1000 dilution.



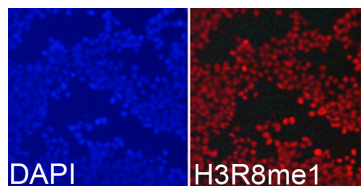
Immunohistochemistry of paraffin-embedded rat heart using MonoMethyl-Histone H3-R8 antibody (A3156) at dilution of 1:100 (40x lens). Perform microwave antigen retrieval with 10 mM PBS buffer pH 7.2 before commencing with IHC staining protocol.



Immunohistochemistry of paraffin-embedded human breast cancer using MonoMethyl-Histone H3-R8 antibody (A3156) at dilution of 1:100 (40x lens). Perform microwave antigen retrieval with 10 mM PBS buffer pH 7.2 before commencing with IHC staining protocol.



Immunohistochemistry of paraffin-embedded mouse testis using MonoMethyl-Histone H3-R8 antibody (A3156) at dilution of 1:100 (40x lens). Perform microwave antigen retrieval with 10 mM PBS buffer pH 7.2 before commencing with IHC staining protocol.



Immunofluorescence analysis of 293T cells using MonoMethyl-Histone H3-R8 antibody (A3156). Blue: DAPI for nuclear staining.