

# TPM2 Rabbit pAb

Catalog No.: A3096

## Basic Information

### Observed MW

36kDa

### Calculated MW

33kDa

### Category

Primary antibody

### Applications

ELISA, WB, IHC-P, IF/ICC, IP

### Cross-Reactivity

Human, Mouse, Rat

## Background

This gene encodes beta-tropomyosin, a member of the actin filament binding protein family, and mainly expressed in slow, type 1 muscle fibers. Mutations in this gene can alter the expression of other sarcomeric tropomyosin proteins, and cause cap disease, nemaline myopathy and distal arthrogyriposis syndromes. Alternatively spliced transcript variants encoding different isoforms have been found for this gene.

## Recommended Dilutions

<b>WB</b>	1:500 - 1:1000
<b>IHC-P</b>	1:50 - 1:100
<b>IF/ICC</b>	1:50 - 1:100
<b>IP</b>	0.5µg-4µg antibody for 400µg-600µg extracts of whole cells

## Contact

 | [www.abclonal.com](http://www.abclonal.com)

## Immunogen Information

### Gene ID

7169

### Swiss Prot

P07951

### Immunogen

A synthetic peptide corresponding to a sequence within amino acids 1-100 of human TPM2 (NP\_003280.2).

### Synonyms

DA1; DA2B; NEM4; TMSB; AMCD1; DA2B4; HEL-S-273; TPM2

## Product Information

### Source

Rabbit

### Isotype

IgG

### Purification

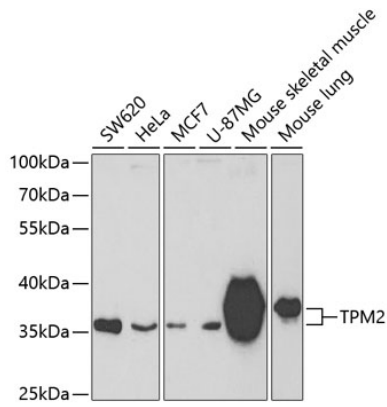
Affinity purification

### Storage

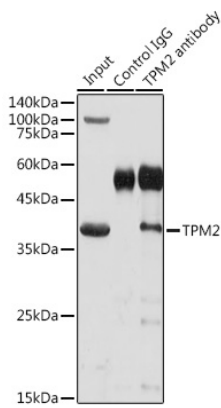
Store at -20°C. Avoid freeze / thaw cycles.

Buffer: PBS with 0.01% thimerosal, 50% glycerol, pH7.3.

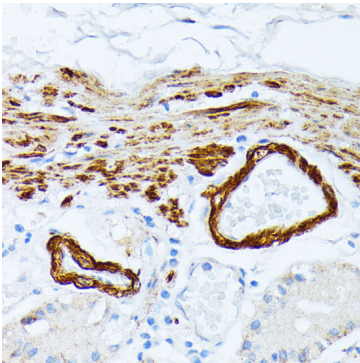
## Validation Data



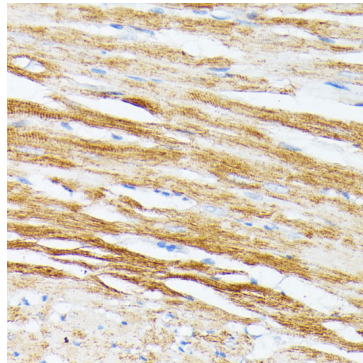
Western blot analysis of various lysates using TPM2 Rabbit pAb (A3096) at 1:400 dilution. Secondary antibody: HRP Goat Anti-Rabbit IgG (H+L) (AS014) at 1:10000 dilution. Lysates/proteins: 25µg per lane. Blocking buffer: 3% nonfat dry milk in TBST. Detection: ECL Basic Kit (RM00020). Exposure time: 90s.



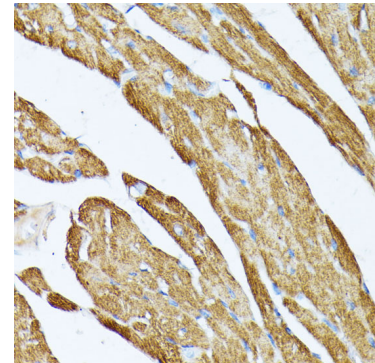
Immunoprecipitation analysis of 300 µg extracts of Mouse skeletal muscle cells using 3 µg TPM2 antibody (A3096). Western blot was performed from the immunoprecipitate using TPM2 antibody (A3096) at a dilution of 1:1000.



Immunohistochemistry analysis of TPM2 in paraffin-embedded human stomach using TPM2 Rabbit pAb (A3096) at dilution of 1:100 (40x lens). Perform microwave antigen retrieval with 10 mM PBS buffer pH 7.2 before commencing with IHC staining protocol.



Immunohistochemistry analysis of TPM2 in paraffin-embedded rat heart using TPM2 Rabbit pAb (A3096) at dilution of 1:100 (40x lens). Perform microwave antigen retrieval with 10 mM PBS buffer pH 7.2 before commencing with IHC staining protocol.



Immunohistochemistry analysis of TPM2 in paraffin-embedded mouse heart using TPM2 Rabbit pAb (A3096) at dilution of 1:100 (40x lens). Perform microwave antigen retrieval with 10 mM PBS buffer pH 7.2 before commencing with IHC staining protocol.