

E-Cadherin Rabbit pAb

Catalog No.: A3044 **24 Publications**

Basic Information

Catalog No.

A3044

Observed MW

125kDa

Calculated MW

90kDa/97kDa

Category

Primary antibody

Applications

WB, IHC, IF

Cross-Reactivity

Human, Mouse

Recommended Dilutions

WB	1:500 - 1:2000
IHC	1:50 - 1:200
IF	1:50 - 1:200

Contact

 | www.abclonal.com

Background

This gene encodes a classical cadherin of the cadherin superfamily. Alternative splicing results in multiple transcript variants, at least one of which encodes a preproprotein that is proteolytically processed to generate the mature glycoprotein. This calcium-dependent cell-cell adhesion protein is comprised of five extracellular cadherin repeats, a transmembrane region and a highly conserved cytoplasmic tail. Mutations in this gene are correlated with gastric, breast, colorectal, thyroid and ovarian cancer. Loss of function of this gene is thought to contribute to cancer progression by increasing proliferation, invasion, and/or metastasis. The ectodomain of this protein mediates bacterial adhesion to mammalian cells and the cytoplasmic domain is required for internalization. This gene is present in a gene cluster with other members of the cadherin family on chromosome 16.

Immunogen Information

Gene ID	Swiss Prot
999	P12830

Immunogen

Recombinant fusion protein containing a sequence corresponding to amino acids 373-622 of human E-Cadherin (NP_004351.1).

Synonyms

Arc-1; CD324; CDHE; ECAD; LCAM; UVO; CDH1; E-Cadherin

Product Information

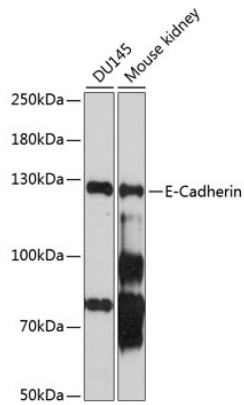
Source	Isotype	Purification
Rabbit	IgG	Affinity purification

Storage

Store at -20°C. Avoid freeze / thaw cycles.

Buffer: PBS with 0.02% sodium azide, 50% glycerol, pH7.3.

Validation Data



Western blot analysis of extracts of various cell lines, using E-Cadherin antibody (A3044) at 1:1000 dilution.

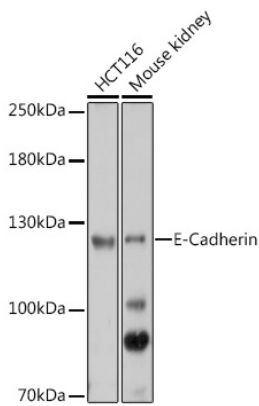
Secondary antibody: HRP Goat Anti-Rabbit IgG (H+L) (AS014) at 1:10000 dilution.

Lysates/proteins: 25ug per lane.

Blocking buffer: 3% nonfat dry milk in TBST.

Detection: ECL Basic Kit (RM00020).

Exposure time: 90s.



Western blot analysis of extracts of various cell lines, using E-Cadherin antibody (A3044) at 1:1000 dilution.

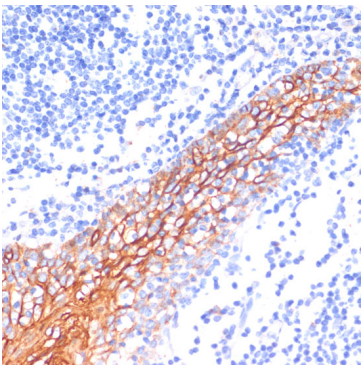
Secondary antibody: HRP Goat Anti-Rabbit IgG (H+L) (AS014) at 1:10000 dilution.

Lysates/proteins: 25ug per lane.

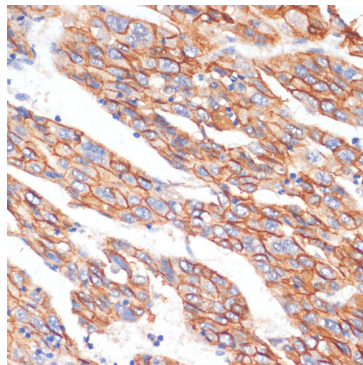
Blocking buffer: 3% nonfat dry milk in TBST.

Detection: ECL Basic Kit (RM00020).

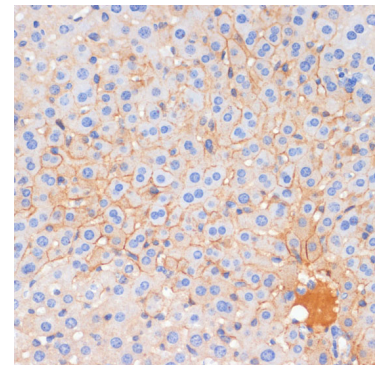
Exposure time: 10s.



Immunohistochemistry of paraffin-embedded human tonsil using E-Cadherin antibody (A3044) at dilution of 1:100 (40x lens).

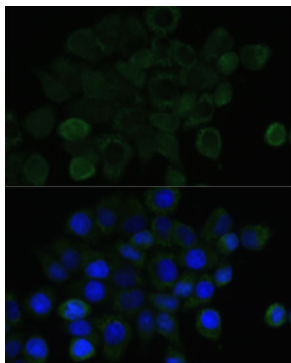


Immunohistochemistry of paraffin-embedded human liver cancer using E-Cadherin antibody (A3044) at dilution of 1:100 (40x lens).



Immunohistochemistry of paraffin-embedded mouse liver using E-Cadherin antibody (A3044) at dilution of 1:100 (40x lens).

Validation Data



Immunofluorescence analysis of HeLa cells using E-Cadherin antibody (A3044) at dilution of 1:100. Blue: DAPI for nuclear staining.