

KLF5 Rabbit pAb

Catalog No.: A2989 **3 Publications**

Basic Information

Observed MW

60kDa

Calculated MW

51kDa

Category

Primary antibody

Applications

ELISA, WB, IHC-P

Cross-Reactivity

Human, Mouse

Background

This gene encodes a member of the Kruppel-like factor subfamily of zinc finger proteins. The encoded protein is a transcriptional activator that binds directly to a specific recognition motif in the promoters of target genes. This protein acts downstream of multiple different signaling pathways and is regulated by post-translational modification. It may participate in both promoting and suppressing cell proliferation. Expression of this gene may be changed in a variety of different cancers and in cardiovascular disease. Alternative splicing results in multiple transcript variants.

Recommended Dilutions

WB	1:200 - 1:1000
IHC-P	1:50 - 1:200

Immunogen Information

Gene ID	Swiss Prot
688	Q13887

Immunogen

Recombinant fusion protein containing a sequence corresponding to amino acids 1-250 of human KLF5 (NP_001721.2).

Synonyms

CKLF; IKLF; BTEB2; KLF5

Contact

 | www.abclonal.com

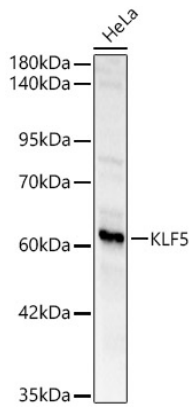
Product Information

Source	Isotype	Purification
Rabbit	IgG	Affinity purification

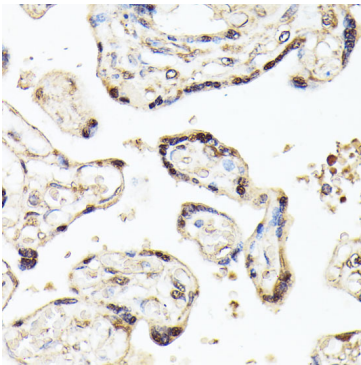
Storage

Store at -20°C. Avoid freeze / thaw cycles.
Buffer: PBS with 0.05% proclin300, 50% glycerol, pH7.3.

Validation Data



Western blot analysis of HeLa, using KLF5 Rabbit pAb (A2989) at 1:400 dilution.
Secondary antibody: HRP Goat Anti-Rabbit IgG (H+L) (AS014) at 1:10000 dilution.
Lysates/proteins: 25ug per lane.
Blocking buffer: 3% nonfat dry milk in TBST.
Detection: ECL Basic Kit (RM00020).
Exposure time: 1s.



Immunohistochemistry analysis of paraffin-embedded human placenta using KLF5 antibody (A2989) at dilution of 1:100 (40x lens). Perform microwave antigen retrieval with 10 mM PBS buffer pH 7.2 before commencing with IHC staining protocol.