

A2738

Leader in Biomolecular Solutions for Life Science



# GDF3 Rabbit pAb

Catalog No.: A2738

## Basic Information

---

### Observed MW

44kDa

### Calculated MW

41kDa

### Category

Polyclonal Antibody

### Applications

WB,ELISA

### Cross-Reactivity

Human,Mouse

## Background

---

This gene encodes a secreted ligand of the TGF-beta (transforming growth factor-beta) superfamily of proteins. Ligands of this family bind various TGF-beta receptors leading to recruitment and activation of SMAD family transcription factors that regulate gene expression. The encoded preproprotein is proteolytically processed to generate each subunit of the disulfide-linked homodimer. This protein plays a role ocular and skeletal development. Mutations in this gene are associated with microphthalmia, coloboma, and skeletal abnormalities in human patients.

## Recommended Dilutions

---

WB 1:200 - 1:1000

## Immunogen Information

---

### Gene ID

9573

### Swiss Prot

Q9NR23

### Immunogen

Recombinant fusion protein containing a sequence corresponding to amino acids 251-364 of human GDF3 (NP\_065685.1).

### Synonyms

KFS3; MCOP7; MCOPCB6; GDF3

## Contact

---



[www.abclonal.com](http://www.abclonal.com)

## Product Information

---

### Source

Rabbit

### Isotype

IgG

### Purification

Affinity purification

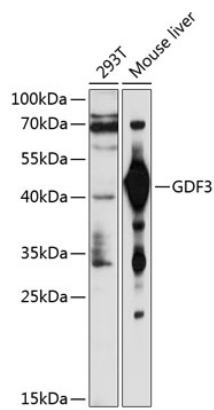
### Storage

Store at -20°C. Avoid freeze / thaw cycles.

Buffer: PBS with 0.02% sodium azide,50% glycerol,pH7.3.

## Validation Data

---



Western blot analysis of various lysates using GDF3 Rabbit pAb (A2738) at 1:1000 dilution.  
Secondary antibody: HRP Goat Anti-Rabbit IgG (H+L) (AS014) at 1:10000 dilution.  
Lysates/proteins: 25µg per lane.  
Blocking buffer: 3% nonfat dry milk in TBST.  
Detection: ECL Basic Kit (RM00020).  
Exposure time: 30s.