

# SYVN1 Rabbit pAb

Catalog No.: A2605 **2 Publications**

## Basic Information

### Catalog No.

A2605

### Observed MW

70kDa

### Calculated MW

61kDa/67kDa

### Category

Primary antibody

### Applications

WB

### Cross-Reactivity

Human, Mouse

## Recommended Dilutions

**WB** 1:500 - 1:2000

## Background

This gene encodes a protein involved in endoplasmic reticulum (ER)-associated degradation. The encoded protein removes unfolded proteins, accumulated during ER stress, by retrograde transport to the cytosol from the ER. This protein also uses the ubiquitin-proteasome system for additional degradation of unfolded proteins. Sequence analysis identified two transcript variants that encode different isoforms.

## Immunogen Information

### Gene ID

84447

### Swiss Prot

Q86TM6

### Immunogen

A synthetic peptide corresponding to a sequence within amino acids 500 to the C-terminus of human SYVN1 (NP\_757385.1).

### Synonyms

SYVN1;DER3;HRD1

## Contact

 | [www.abclonal.com](http://www.abclonal.com)

## Product Information

### Source

Rabbit

### Isotype

IgG

### Purification

Affinity purification

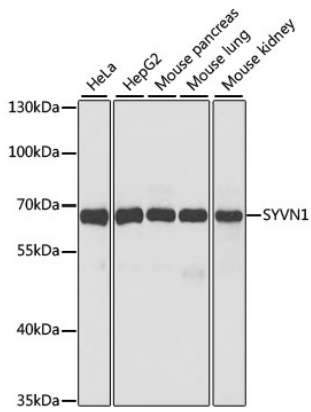
### Storage

Store at -20°C. Avoid freeze / thaw cycles.

Buffer: PBS with 0.02% sodium azide, 50% glycerol, pH7.3.

## Validation Data

---



Western blot analysis of extracts of various cell lines, using SYVN1 antibody (A2605) at 1:1000 dilution.

Secondary antibody: HRP Goat Anti-Rabbit IgG (H+L) (AS014) at 1:10000 dilution.

Lysates/proteins: 25ug per lane.

Blocking buffer: 3% nonfat dry milk in TBST.

Detection: ECL Basic Kit (RM00020).

Exposure time: 60s.