

A2567

Leader in Biomolecular Solutions for Life Science



LCP2 Rabbit pAb

Catalog No.: A2567

Basic Information

Observed MW

76kDa

Calculated MW

60kDa

Category

Mouse Monoclonal Antibody

Applications

WB,ELISA

Cross-Reactivity

Human,Mouse

Background

This gene encodes an adapter protein that acts as a substrate of the T cell antigen receptor (TCR)-activated protein tyrosine kinase pathway. The encoded protein associates with growth factor receptor bound protein 2, and is thought to play a role TCR-mediated intracellular signal transduction. A similar protein in mouse plays a role in normal T-cell development and activation. Mice lacking this gene show subcutaneous and intraperitoneal fetal hemorrhaging, dysfunctional platelets and impaired viability.

Recommended Dilutions

WB 1:100 - 1:500

Immunogen Information

Gene ID

3937

Swiss Prot

Q13094

Immunogen

Recombinant fusion protein containing a sequence corresponding to amino acids 159-533 of human LCP2 (NP_005556.1).

Synonyms

IMD81; SLP76; SLP-76; LCP2

Contact



www.abclonal.com

Product Information

Source

Rabbit

Isotype

IgG

Purification

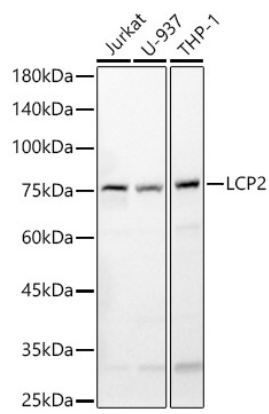
Affinity purification

Storage

Store at -20°C. Avoid freeze / thaw cycles.

Buffer: PBS with 0.02% sodium azide,50% glycerol,pH7.3.

Validation Data



Western blot analysis of various lysates, using LCP2 Rabbit pAb (A2567) at 1:500 dilution.
Secondary antibody: HRP Goat Anti-Rabbit IgG (H+L) (AS014) at 1:10000 dilution.
Lysates/proteins: 25µg per lane.
Blocking buffer: 3% nonfat dry milk in TBST.
Detection: ECL Basic Kit (RM00020).
Exposure time: 30s.