

[KO Validated] HMGB1 Rabbit pAb

Catalog No.: A2553 **KO** **Validated** **11 Publications**

Basic Information

Catalog No.

A2553

Observed MW

25KDa

Calculated MW

24kDa

Category

Primary antibody

Applications

WB, IHC, IF


Cross-Reactivity

Human, Mouse, Rat

Recommended Dilutions

WB	1:500 - 1:2000
IHC	1:50 - 1:200
IF	1:50 - 1:200

Contact

 | www.abclonal.com

Background

This gene encodes a protein that belongs to the High Mobility Group-box superfamily. The encoded non-histone, nuclear DNA-binding protein regulates transcription, and is involved in organization of DNA. This protein plays a role in several cellular processes, including inflammation, cell differentiation and tumor cell migration. Multiple pseudogenes of this gene have been identified. Alternative splicing results in multiple transcript variants that encode the same protein.

Immunogen Information

Gene ID	Swiss Prot
3146	P09429

Immunogen

A synthetic peptide corresponding to a sequence within amino acids 100-200 of human HMGB1 (NP_002119.1).

Synonyms

HMG-1;HMG1;HMG3;SBP-1;HMGB1

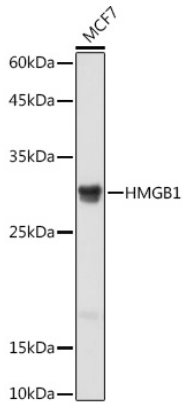
Product Information

Source	Isotype	Purification
Rabbit	IgG	Affinity purification

Storage

Store at -20°C. Avoid freeze / thaw cycles.
Buffer: PBS with 0.02% sodium azide, 50% glycerol, pH7.3.

Validation Data



Western blot analysis of extracts of MCF7 cells, using [KO Validated] HMGB1 Rabbit pAb (A2553) at 1:1000 dilution.

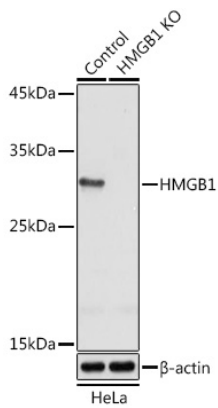
Secondary antibody: HRP Goat Anti-Rabbit IgG (H+L) (AS014) at 1:10000 dilution.

Lysates/proteins: 25ug per lane.

Blocking buffer: 3% nonfat dry milk in TBST.

Detection: ECL Basic Kit (RM00020).

Exposure time: 1s.



Western blot analysis of extracts from normal (control) and [KO Validated] HMGB1 Rabbit pAb knockout (KO) HeLa cells, using [KO Validated] HMGB1 Rabbit pAb antibody (A2553) at 1:1000 dilution.

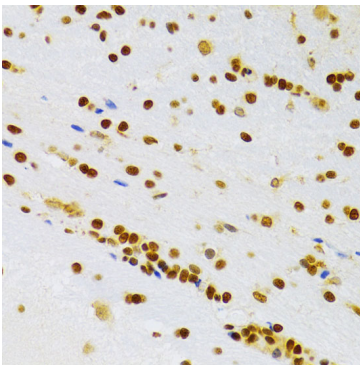
Secondary antibody: HRP Goat Anti-Rabbit IgG (H+L) (AS014) at 1:10000 dilution.

Lysates/proteins: 25ug per lane.

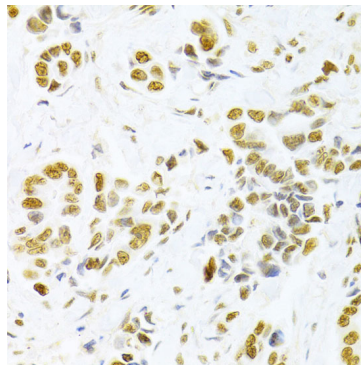
Blocking buffer: 3% nonfat dry milk in TBST.

Detection: ECL Basic Kit (RM00020).

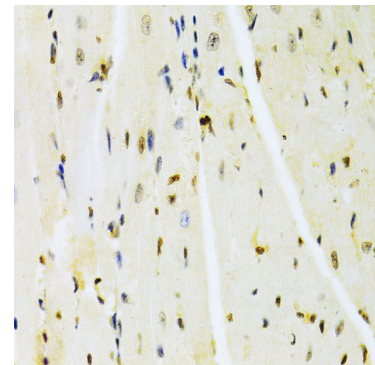
Exposure time: 1s.



Immunohistochemistry of paraffin-embedded rat brain using HMGB1 Antibody (A2553) at dilution of 1:100 (40x lens).

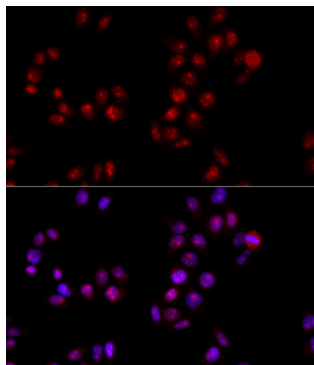


Immunohistochemistry of paraffin-embedded human breast cancer using HMGB1 Antibody (A2553) at dilution of 1:100 (40x lens).



Immunohistochemistry of paraffin-embedded mouse heart using HMGB1 Antibody (A2553) at dilution of 1:100 (40x lens).

Validation Data



Immunofluorescence analysis of HeLa cells using HMGB1 antibody (A2553) at dilution of 1:100 (40x lens). Blue: DAPI for nuclear staining.