

A2235

Leader in Biomolecular Solutions for Life Science



## $\alpha$ -Actin-1 ( $\alpha$ -SMA) Rabbit mAb

Catalog No.: A2235 **Recombinant** **1 Publications**

### Basic Information

#### Observed MW

42kDa

#### Calculated MW

42kDa

#### Category

SMab Recombinant Monoclonal Antibody

#### Applications

WB,IHC-P,IF/ICC,ELISA

#### Cross-Reactivity

Human,Mouse,Rat

#### CloneNo number

ARC1912

### Background

The product encoded by this gene belongs to the actin family of proteins, which are highly conserved proteins that play a role in cell motility, structure and integrity. Alpha, beta and gamma actin isoforms have been identified, with alpha actins being a major constituent of the contractile apparatus, while beta and gamma actins are involved in the regulation of cell motility. This actin is an alpha actin that is found in skeletal muscle. Mutations in this gene cause a variety of myopathies, including nemaline myopathy, congenital myopathy with excess of thin myofilaments, congenital myopathy with cores, and congenital myopathy with fiber-type disproportion, diseases that lead to muscle fiber defects with manifestations such as hypotonia.

### Recommended Dilutions

WB	1:500 - 1:1000
IHC-P	1:50 - 1:200
IF/ICC	1:50 - 1:200

### Immunogen Information

Gene ID	Swiss Prot
58	P68133

#### Immunogen

A synthetic peptide corresponding to a sequence within amino acids 278-377 of human  $\alpha$ -Actin-1 (ACTA1) (P68133).

#### Synonyms

ACTA; ACTA1; CFTD; MPFD; NEM1; NEM2; NEM3; SHPM; CFTD1; CFTDM; CMYP2A; CMYP2B; CMYP2C;  $\alpha$ -Actin-1 ( $\alpha$ -SMA)

### Contact



[www.abclonal.com](http://www.abclonal.com)

### Product Information

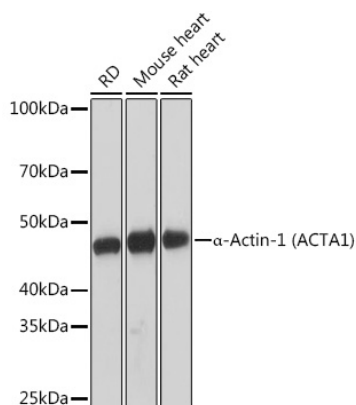
Source	Isotype	Purification
Rabbit	IgG	Affinity purification

#### Storage

Store at -20°C. Avoid freeze / thaw cycles.

Buffer: PBS with 0.02% sodium azide,0.05% BSA,50% glycerol,pH7.3.

## Validation Data



Western blot analysis of lysates from various s, using  $\alpha$ -Actin-1 ( $\alpha$ -SMA) Rabbit mAb (A2235) at 1:1000 dilution.

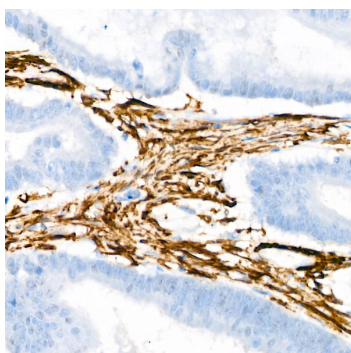
Secondary antibody: HRP Goat Anti-Rabbit IgG (H+L) (AS014) at 1:10000 dilution.

Lysates/proteins: 25 $\mu$ g per lane.

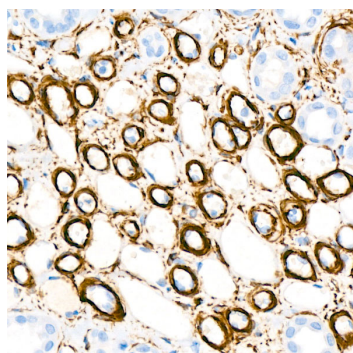
Blocking buffer: 3% nonfat dry milk in TBST.

Detection: ECL Basic Kit (RM00020).

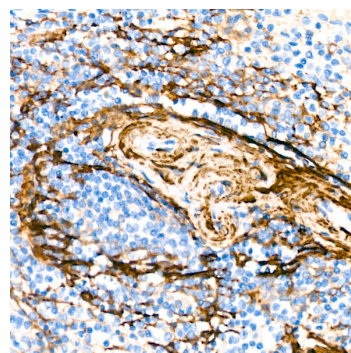
Exposure time: 1s.



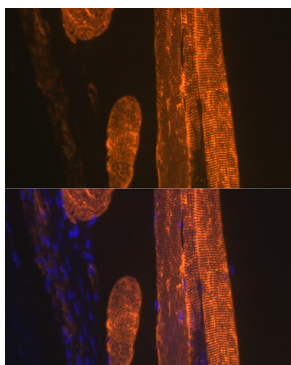
Immunohistochemistry analysis of  $\alpha$ -Actin-1 ( $\alpha$ -SMA) in paraffin-embedded human colon carcinoma using  $\alpha$ -Actin-1 (ACTA1) Rabbit mAb (A2235) at dilution of 1:100 (40x lens). Perform microwave antigen retrieval with 10 mM Tris/EDTA buffer pH 9.0 before commencing with IHC staining protocol.



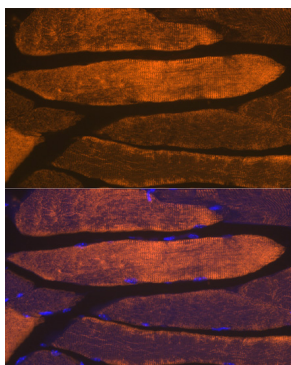
Immunohistochemistry analysis of  $\alpha$ -Actin-1 ( $\alpha$ -SMA) in paraffin-embedded human kidney using  $\alpha$ -Actin-1 (ACTA1) Rabbit mAb (A2235) at dilution of 1:100 (40x lens). Perform microwave antigen retrieval with 10 mM Tris/EDTA buffer pH 9.0 before commencing with IHC staining protocol.



Immunohistochemistry analysis of  $\alpha$ -Actin-1 ( $\alpha$ -SMA) in paraffin-embedded human spleen using  $\alpha$ -Actin-1 (ACTA1) Rabbit mAb (A2235) at dilution of 1:100 (40x lens). Perform microwave antigen retrieval with 10 mM Tris/EDTA buffer pH 9.0 before commencing with IHC staining protocol.



Immunofluorescence analysis of paraffin-embedded rat skeletal muscle using  $\alpha$ -Actin-1 (ACTA1) Rabbit mAb (A2235) at dilution of 1:100 (40x lens). Secondary antibody: Cy3 Goat Anti-Rabbit IgG (H+L) (AS007) at 1:500 dilution. Blue: DAPI for nuclear staining.



Immunofluorescence analysis of paraffin-embedded mouse skeletal muscle using  $\alpha$ -Actin-1 (ACTA1) Rabbit mAb (A2235) at dilution of 1:100 (40x lens). Secondary antibody: Cy3 Goat Anti-Rabbit IgG (H+L) (AS007) at 1:500 dilution. Blue: DAPI for nuclear staining.