

# Insulin Rabbit pAb

Catalog No.: A2090 **2 Publications**

## Basic Information

**Catalog No.**

A2090

**Observed MW**

12kDa

**Calculated MW**

11kDa/21kDa

**Category**

Primary antibody

**Applications**

WB, IHC, IF

**Cross-Reactivity**

Human, Mouse, Rat

## Recommended Dilutions

|            |                |
|------------|----------------|
| <b>WB</b>  | 1:500 - 1:2000 |
| <b>IHC</b> | 1:50 - 1:200   |
| <b>IF</b>  | 1:50 - 1:200   |

## Contact

 | [www.abclonal.com](http://www.abclonal.com)

## Background

After removal of the precursor signal peptide, proinsulin is post-translationally cleaved into three peptides: the B chain and A chain peptides, which are covalently linked via two disulfide bonds to form insulin, and C-peptide. Binding of insulin to the insulin receptor (INSR) stimulates glucose uptake. A multitude of mutant alleles with phenotypic effects have been identified. There is a read-through gene, INS-IGF2, which overlaps with this gene at the 5' region and with the IGF2 gene at the 3' region. Alternative splicing results in multiple transcript variants.

## Immunogen Information

|                |                   |
|----------------|-------------------|
| <b>Gene ID</b> | <b>Swiss Prot</b> |
| 3630           | P01308            |

**Immunogen**

Recombinant fusion protein containing a sequence corresponding to amino acids 1-110 of human INS (NP\_000198.1).

**Synonyms**

IDDM;IDDM1;IDDM2;ILPR;IRDN;MODY10;INS;Insulin;insulin

## Product Information

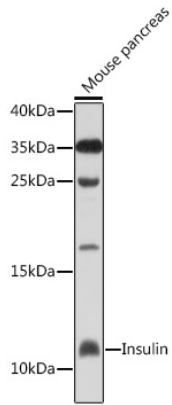
|               |                |                       |
|---------------|----------------|-----------------------|
| <b>Source</b> | <b>Isotype</b> | <b>Purification</b>   |
| Rabbit        | IgG            | Affinity purification |

**Storage**

Store at -20°C. Avoid freeze / thaw cycles.

Buffer: PBS with 0.02% sodium azide, 50% glycerol, pH7.3.

## Validation Data



Western blot analysis of extracts of mouse pancreas, using Insulin antibody (A2090) at 1:1000 dilution.

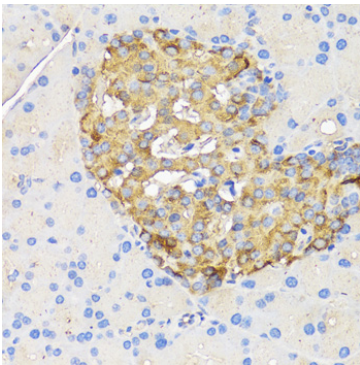
Secondary antibody: HRP Goat Anti-Rabbit IgG (H+L) (AS014) at 1:10000 dilution.

Lysates/protein: 25ug per lane.

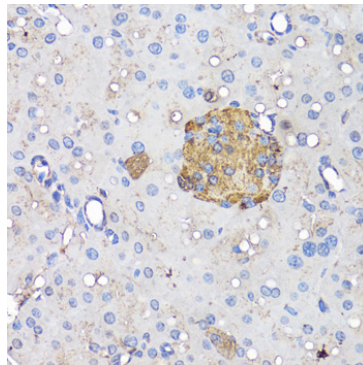
Blocking buffer: 3% nonfat dry milk in TBST.

Detection: ECL Enhanced Kit (RM00021).

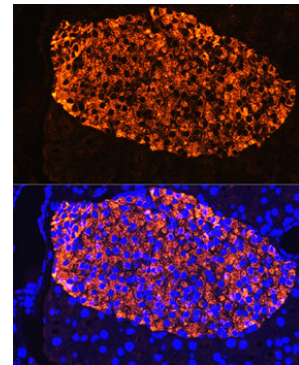
Exposure time: 30s.



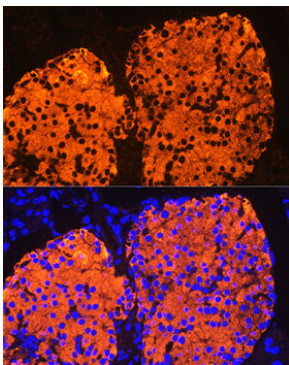
Immunohistochemistry of paraffin-embedded rat pancreatic islet using Insulin antibody (A2090) at dilution of 1:50 (40x lens).



Immunohistochemistry of paraffin-embedded mouse pancreatic islet using Insulin antibody (A2090) at dilution of 1:50 (40x lens).



Immunofluorescence analysis of Rat pancreas using Insulin Rabbit pAb (A2090) at dilution of 1:100. Blue: DAPI for nuclear staining.



Immunofluorescence analysis of Mouse pancreatic islet using Insulin Rabbit pAb (A2090) at dilution of 1:100. Blue: DAPI for nuclear staining.