

A20639

Leader in Biomolecular Solutions for Life Science



# CAL Rabbit pAb

Catalog No.: A20639

## Basic Information

### Observed MW

9kDa

### Calculated MW

9kDa

### Category

Polyclonal Antibody

### Applications

WB,ELISA

### Cross-Reactivity

Oryza sativa

## Background

Plant defensin-like protein involved in accumulation of cadmium (Cd) in rice leaves. Mediates Cd efflux from cytosol into extracellular spaces via chelation. This drives Cd secretion from xylem parenchyma cells into the xylem vessels, hence lowering Cd levels in cytosol meanwhile promoting Cd translocation from roots to shoots.

## Recommended Dilutions

WB 1:500 - 1:2000

## Immunogen Information

### Gene ID

4330051

### Swiss Prot

Q6K209

### Immunogen

Recombinant protein of Oryza sativa CAL.

### Synonyms

BC12; CAL

## Contact



[www.abclonal.com](http://www.abclonal.com)

## Product Information

### Source

Rabbit

### Isotype

IgG

### Purification

Affinity purification

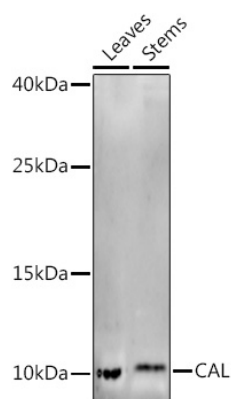
### Storage

Store at -20°C. Avoid freeze / thaw cycles.

Buffer: PBS with 0.05% proclin300,50% glycerol,pH7.3.

## Validation Data

---



Western blot analysis of extracts of various tissues from the japonica rice (*Oryza sativa* L.) variety Zhonghua 11, using CAL Rabbit pAb (A20639) at 1:1000 dilution.  
Secondary antibody: HRP Goat Anti-Rabbit IgG (H+L) (AS014) at 1:10000 dilution.  
Lysates/proteins: 25µg per lane.  
Blocking buffer: 3% nonfat dry milk in TBST.  
Detection: ECL Enhanced Kit (RM00021).  
Exposure time: 60s.