

A20634

Leader in Biomolecular Solutions for Life Science



Bph3 Rabbit pAb

Catalog No.: A20634

Basic Information

Observed MW

90kDa

Calculated MW

90kDa

Category

Polyclonal Antibody

Applications

WB,ELISA

Cross-Reactivity

Oryza sativa

Background

Bph3 is a cluster of three genes encoding plasma membrane-localized lectin receptor kinases (OsLecRK1-OsLecRK3)

Recommended Dilutions

WB 1:500 - 1:2000

Immunogen Information

Gene ID

4335151

Swiss Prot

Immunogen

Recombinant fusion protein containing a sequence corresponding to amino acids 659-811 of Oryza sativa Bph3. (Q0JEU6).

Synonyms

OsLecRK3; Bph3

Contact



www.abclonal.com

Product Information

Source

Rabbit

Isotype

IgG

Purification

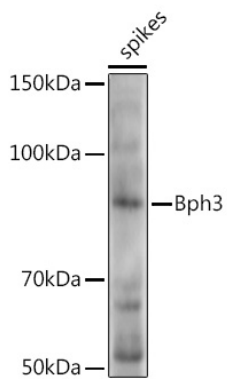
Affinity purification

Storage

Store at -20°C. Avoid freeze / thaw cycles.

Buffer: PBS with 0.05% proclin300,50% glycerol,pH7.3.

Validation Data



Western blot analysis of extracts of various tissues from the japonica rice (*Oryza sativa* L.) variety Zhonghua 11, using Bph3 Rabbit pAb (A20634) at 1:1000 dilution.
Secondary antibody: HRP Goat Anti-Rabbit IgG (H+L) (AS014) at 1:10000 dilution.
Lysates/proteins: 25µg per lane.
Blocking buffer: 3% nonfat dry milk in TBST.
Detection: ECL Enhanced Kit (RM00021).
Exposure time: 30s.