

OsBip1 Rabbit pAb

Catalog No.: A20632

Basic Information

Observed MW
80kDa

Calculated MW
73kDa

Category
Primary antibody

Applications
ELISA, WB

Cross-Reactivity
Oryza sativa

Background

This protein is involved in the pathway starch biosynthesis, which is part of Glycan biosynthesis.

Recommended Dilutions

WB 1:500 - 1:2000

Immunogen Information

| | |
|----------------|-------------------|
| Gene ID | Swiss Prot |
| 4328075 | Q6Z7B0 |

Immunogen
Recombinant protein of Oryza sativa OsBip1.

Synonyms
BIP; OsBiP1; OsJ_05115; OJ1442_E05.10; OsBip1

Contact

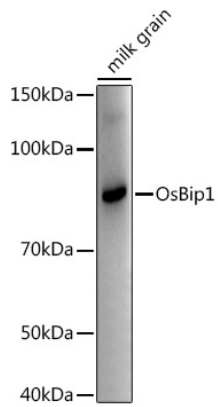
 | www.abclonal.com

Product Information

| | | |
|---------------|----------------|-----------------------|
| Source | Isotype | Purification |
| Rabbit | IgG | Affinity purification |

Storage
Store at -20°C. Avoid freeze / thaw cycles.
Buffer: PBS with 0.05% proclin300, 50% glycerol, pH7.3.

Validation Data



Western blot analysis of extracts of various tissues from the japonica rice (*Oryza sativa* L.) variety Zhonghua 11, using OsBip1 Rabbit pAb (A20632) at 1:1000 dilution. Secondary antibody: HRP Goat Anti-Rabbit IgG (H+L) (AS014) at 1:10000 dilution. Lysates/proteins: 25µg per lane. Blocking buffer: 3% nonfat dry milk in TBST. Detection: ECL Enhanced Kit (RM00021). Exposure time: 10s.