

A20631

Leader in Biomolecular Solutions for Life Science



# OsSSIIa Rabbit pAb

Catalog No.: A20631

## Basic Information

---

**Observed MW**

88kDa

**Calculated MW**

88kDa

**Category**

Polyclonal Antibody

**Applications**

WB,ELISA

**Cross-Reactivity**

Oryza sativa

## Background

---

This protein is involved in the pathway starch biosynthesis, which is part of Glycan biosynthesis.

## Recommended Dilutions

---

WB 1:500 - 1:2000

## Immunogen Information

---

**Gene ID**

4340567

**Swiss Prot**

B7ESH5

**Immunogen**

Recombinant protein of Oryza sativa OsSSIIa.

**Synonyms**

ALK; SSS2A; SSII-3; OsSSIIa

## Contact

---



[www.abclonal.com](http://www.abclonal.com)

## Product Information

---

**Source**

Rabbit

**Isotype**

IgG

**Purification**

Affinity purification

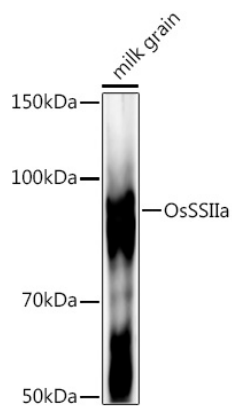
**Storage**

Store at -20°C. Avoid freeze / thaw cycles.

Buffer: PBS with 0.05% proclin300,50% glycerol,pH7.3.

## Validation Data

---



Western blot analysis of extracts of various tissues from the japonica rice (*Oryza sativa* L.) variety Zhonghua 11, using OsSSIa Rabbit pAb (A20631) at 1:1000 dilution.  
Secondary antibody: HRP Goat Anti-Rabbit IgG (H+L) (AS014) at 1:10000 dilution.  
Lysates/proteins: 25µg per lane.  
Blocking buffer: 3% nonfat dry milk in TBST.  
Detection: ECL Basic Kit (RM00020).  
Exposure time: 30s.