

GF14b Rabbit pAb

Catalog No.: A20625 **1 Publications**

Basic Information

Observed MW
30kDa

Calculated MW
30kDa

Category
Primary antibody

Applications
ELISA, WB

Cross-Reactivity
Oryza sativa

Background

Is associated with a DNA binding complex that binds to the G box, a well-characterized cis-acting DNA regulatory element found in plant genes.

Recommended Dilutions

WB 1:500 - 1:2000

Immunogen Information

Gene ID	Swiss Prot
4336066	Q0JCM0

Immunogen
Recombinant protein of Oryza sativa GF14b.

Synonyms
GF14B; B0812A04.1; GF14b

Contact

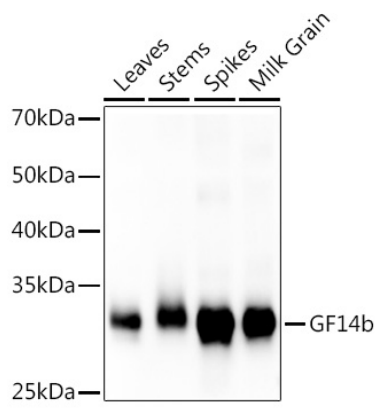
 | www.abclonal.com

Product Information

Source	Isotype	Purification
Rabbit	IgG	Affinity purification

Storage
Store at -20°C. Avoid freeze / thaw cycles.
Buffer: PBS with 0.05% proclin300, 50% glycerol, pH7.3.

Validation Data



Western blot analysis of extracts of various tissues from the japonica rice (*Oryza sativa* L.) variety Zhonghua 11, using GF14b Rabbit pAb (A20625) at 1:1000 dilution.
Secondary antibody: HRP Goat Anti-Rabbit IgG (H+L) (AS014) at 1:10000 dilution.
Lysates/proteins: 25µg per lane.
Blocking buffer: 3% nonfat dry milk in TBST.
Detection: ECL Basic Kit (RM00020).
Exposure time: 30s.