

A20615

Leader in Biomolecular Solutions for Life Science



HCoV-OC43 Spike S1 Rabbit pAb

Catalog No.: A20615

Basic Information

Observed MW

110kDa/145kDa

Calculated MW

150kDa

Category

Polyclonal Antibody

Applications

WB,ELISA

Cross-Reactivity

HCoV-OC43

Background

S1 attaches the virion to the cell membrane by interacting with sialic acid-containing cell receptors, initiating the infection.; [Spike protein S1]: attaches the virion to the cell membrane by interacting with host receptor, initiating the infection.

Recommended Dilutions

WB 1:500 - 1:1000

Immunogen Information

Gene ID

39105218

Swiss Prot

P36334

Immunogen

A synthetic peptide corresponding to a sequence within amino acids 97-196 of coronavirus Spike S1 (YP_009555241.1).

Synonyms

Contact



www.abclonal.com

Product Information

Source

Rabbit

Isotype

IgG

Purification

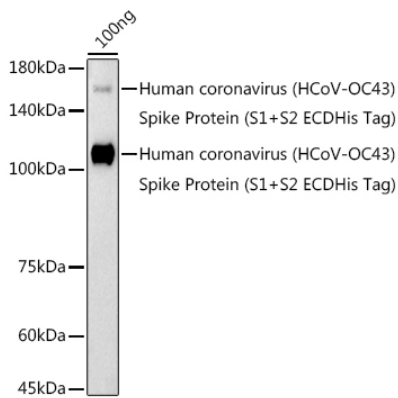
Affinity purification

Storage

Store at -20°C. Avoid freeze / thaw cycles.

Buffer: PBS with 0.05% proclin300,50% glycerol,pH7.3.

Validation Data



Western blot analysis of lysates from Human coronavirus (HCoV-OC43) Spike Protein (S1+S2 ECDHis Tag), using HCoV-OC43 Spike S1 Rabbit pAb (A20615) at 1:1000 dilution.

Secondary antibody: HRP Goat Anti-Rabbit IgG (H+L) (AS014) at 1:10000 dilution.

Lysates/proteins: 25µg per lane.

Blocking buffer: 3% nonfat dry milk in TBST.

Detection: ECL Enhanced Kit (RM00021).

Exposure time: 180s.