

ABCA8A Rabbit pAb

Catalog No.: A20496

Basic Information

Observed MW

180-250kDa

Calculated MW

184kDa

Category

Primary antibody

Applications

ELISA, WB, IHC-P

Cross-Reactivity

Human, Mouse, Rat

Background

Predicted to enable ABC-type xenobiotic transporter activity and lipid transporter activity. Predicted to be involved in several processes, including cholesterol efflux; positive regulation of cholesterol efflux; and sphingomyelin biosynthetic process. Predicted to be located in endoplasmic reticulum and plasma membrane. Predicted to be active in intracellular membrane-bounded organelle. Is expressed in telencephalon. Orthologous to human ABCA8 (ATP binding cassette subfamily A member 8).

Recommended Dilutions

WB	1:500 - 1:1000
IHC-P	1:50 - 1:200

Immunogen Information

Gene ID	Swiss Prot
217258	Q8K442

Immunogen

Recombinant fusion protein containing a sequence corresponding to amino acids 690-828 of mouse ABCA8A (NP_694785.3).

Synonyms

Contact

 | www.abclonal.com

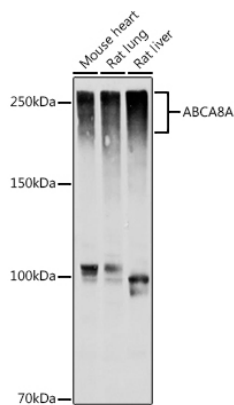
Product Information

Source	Isotype	Purification
Rabbit	IgG	Affinity purification

Storage

Store at -20°C. Avoid freeze / thaw cycles.
Buffer: PBS with 0.05% proclin300, 50% glycerol, pH7.3.

Validation Data



Western blot analysis of extracts of various cell lines, using ABCA8A antibody (A20496) at 1:1000 dilution.

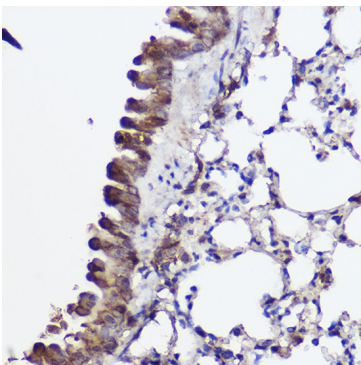
Secondary antibody: HRP Goat Anti-Rabbit IgG (H+L) (AS014) at 1:10000 dilution.

Lysates/proteins: 25µg per lane.

Blocking buffer: 3% nonfat dry milk in TBST.

Detection: ECL Basic Kit (RM00020).

Exposure time: 10s.



Immunohistochemistry analysis of paraffin-embedded mouse lung using ABCA8A Rabbit pAb (A20496) at dilution of 1:100 (40x lens). Perform high pressure antigen retrieval with 10 mM citrate buffer pH 6.0 before commencing with IHC staining protocol.