

A2048

Leader in Biomolecular Solutions for Life Science



ADRB2 Rabbit pAb

Catalog No.: A2048 **1 Publications**

Basic Information

Observed MW

50-100kDa

Calculated MW

46kDa

Category

Polyclonal Antibody

Applications

WB,IF/ICC,ELISA

Cross-Reactivity

Human,Mouse,Rat

Background

This gene encodes beta-2-adrenergic receptor which is a member of the G protein-coupled receptor superfamily. This receptor is directly associated with one of its ultimate effectors, the class C L-type calcium channel Ca(V)1.2. This receptor-channel complex also contains a G protein, an adenylyl cyclase, cAMP-dependent kinase, and the counterbalancing phosphatase, PP2A. The assembly of the signaling complex provides a mechanism that ensures specific and rapid signaling by this G protein-coupled receptor. This receptor is also a transcription regulator of the alpha-synuclein gene, and together, both genes are believed to be associated with risk of Parkinson's Disease. This gene is intronless. Different polymorphic forms, point mutations, and/or downregulation of this gene are associated with nocturnal asthma, obesity, type 2 diabetes and cardiovascular disease.

Recommended Dilutions

WB	1:500 - 1:1000
IF/ICC	1:50 - 1:200

Immunogen Information

Gene ID	Swiss Prot
154	P07550

Immunogen

A synthetic peptide corresponding to a sequence within amino acids 300-400 of human ADRB2 (NP_000015.1).

Synonyms

BAR; B2AR; ADRBR; ADRB2R; BETA2AR; ADRB2

Contact



www.abclonal.com

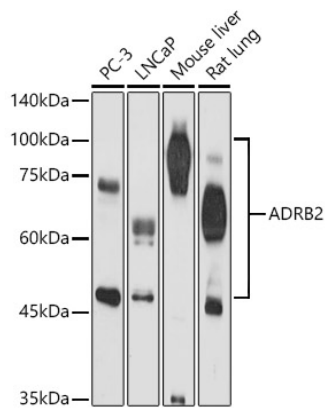
Product Information

Source	Isotype	Purification
Rabbit	IgG	Affinity purification

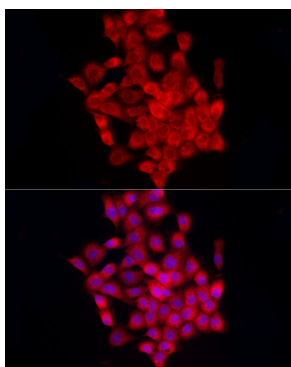
Storage

Store at -20°C. Avoid freeze / thaw cycles.
Buffer: PBS with 0.02% sodium azide,50% glycerol,pH7.3.

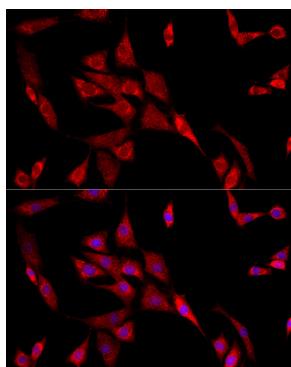
Validation Data



Western blot analysis of various lysates using ADRB2 Rabbit pAb (A2048) at 1:500 dilution.
Secondary antibody: HRP Goat Anti-Rabbit IgG (H+L) (AS014) at 1:10000 dilution.
Lysates/proteins: 25µg per lane.
Blocking buffer: 3% nonfat dry milk in TBST.
Detection: ECL Basic Kit (RM00020).
Exposure time: 180s.



Immunofluorescence analysis of A-431 cells using ADRB2 Rabbit pAb (A2048) at dilution of 1:100 (40x lens). Secondary antibody: Cy3 Goat Anti-Rabbit IgG (H+L) (AS007) at 1:500 dilution. Blue: DAPI for nuclear staining.



Immunofluorescence analysis of NIH/3T3 cells using ADRB2 Rabbit pAb (A2048) at dilution of 1:100 (40x lens). Secondary antibody: Cy3 Goat Anti-Rabbit IgG (H+L) (AS007) at 1:500 dilution. Blue: DAPI for nuclear staining.