

A20369

Leader in Biomolecular Solutions for Life Science



OsLIC1 Rabbit pAb

Catalog No.: A20369

Basic Information

Observed MW

50kDa

Calculated MW

43kDa

Category

Polyclonal Antibody

Applications

WB,ELISA

Cross-Reactivity

Oryza sativa

Background

Transcriptional activator that binds double-stranded DNA and the single-stranded RNA polymers poly(rA), poly(rU) and poly(rG), but not poly(rC). Mediates optimal plant architecture through brassinosteroid (BR) signaling. May act as a negative regulator in sterol homeostasis. Acts as negative regulator of BR signaling. Binds to the specific DNA sequence 5'-CTCGC-3' of BZR1 promoter and negatively regulates BZR1. Acts as an antagonistic transcription factor of BZR1 to attenuate the BR signaling pathway and regulate leaf bending. Represses the expression of ILI1, and activates that of IBH1 to balance the regulation activity of BZR1

Recommended Dilutions

WB 1:500 - 1:2000

Immunogen Information

Gene ID

4341994

Swiss Prot

Q5Z807

Immunogen

A synthetic peptide of Oryza sativa OsLIC1.

Synonyms

LIC; OsLIC; OsC3H46; OJ1215_E11.23; OsLIC1

Contact



www.abclonal.com

Product Information

Source

Rabbit

Isotype

IgG

Purification

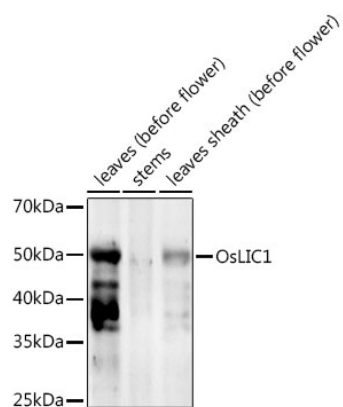
Affinity purification

Storage

Store at -20°C. Avoid freeze / thaw cycles.

Buffer: PBS with 0.01% thimerosal, 50% glycerol, pH7.3.

Validation Data



Western blot analysis of extracts of various tissues from the japonica rice (*Oryza sativa* L.) variety Zhonghua 11, using OsLIC1 Rabbit pAb (A20369) at 1:1000 dilution.
Secondary antibody: HRP Goat Anti-Rabbit IgG (H+L) (AS014) at 1:10000 dilution.
Lysates/proteins: 25µg per lane.
Blocking buffer: 3% nonfat dry milk in TBST.
Detection: ECL Enhanced Kit (RM00021).
Exposure time: 300s.