

A20215

Leader in Biomolecular Solutions for Life Science



CD38 Rabbit mAb

Catalog No.: A20215 **Recombinant** **1 Publications**

Basic Information

Observed MW

Refer to figures

Calculated MW

34kDa

Category

SMab Recombinant Monoclonal Antibody

Applications

FC,ELISA

Cross-Reactivity

Human

CloneNo number

ARC5131-01

Background

The protein encoded by this gene is a non-lineage-restricted, type II transmembrane glycoprotein that synthesizes and hydrolyzes cyclic adenosine 5'-diphosphate-ribose, an intracellular calcium ion mobilizing messenger. The release of soluble protein and the ability of membrane-bound protein to become internalized indicate both extracellular and intracellular functions for the protein. This protein has an N-terminal cytoplasmic tail, a single membrane-spanning domain, and a C-terminal extracellular region with four N-glycosylation sites. Crystal structure analysis demonstrates that the functional molecule is a dimer, with the central portion containing the catalytic site. It is used as a prognostic marker for patients with chronic lymphocytic leukemia. Alternative splicing results in multiple transcript variants.

Recommended Dilutions

FC 1:50 - 1:200

Immunogen Information

Gene ID

952

Swiss Prot

P28907

Immunogen

Recombinant fusion protein containing a sequence corresponding to amino acids 43-300 of human CD38 (P28907).

Synonyms

ADPRC1; cADPR1; ADPRC 1; CD38

Contact



www.abclonal.com

Product Information

Source

Rabbit

Isotype

IgG

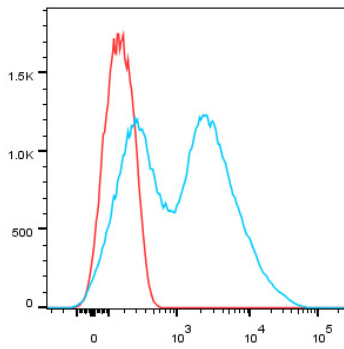
Purification

Affinity purification

Storage

Store at 4°C. Avoid freeze / thaw cycles.
Buffer: PBS with 0.01% thimerosal, pH7.3.

Validation Data



Human peripheral blood lymphocytes stained with CD38 Rabbit mAb (10 µg/mL) plus FITC conjugated goat anti-rabbit IgG (Blue). Secondary antibody only staining (red) were used as a control.