

A20213

Leader in Biomolecular Solutions for Life Science



CD3E+CD3G Rabbit mAb

Catalog No.: A20213 **Recombinant** **1 Publications**

Basic Information

Observed MW

23kDa

Calculated MW

23kDa

Category

SMab Recombinant Monoclonal Antibody

Applications

WB,FC,ELISA

Cross-Reactivity

Human

CloneNo number

ARC5083-01

Background

The protein encoded by this gene is the CD3-epsilon polypeptide, which together with CD3-gamma, -delta and -zeta, and the T-cell receptor alpha/beta and gamma/delta heterodimers, forms the T-cell receptor-CD3 complex. This complex plays an important role in coupling antigen recognition to several intracellular signal-transduction pathways. The genes encoding the epsilon, gamma and delta polypeptides are located in the same cluster on chromosome 11. The epsilon polypeptide plays an essential role in T-cell development. Defects in this gene cause immunodeficiency. This gene has also been linked to a susceptibility to type I diabetes in women. The protein encoded by this gene is the CD3-gamma polypeptide, which together with CD3-epsilon, -delta and -zeta, and the T-cell receptor alpha/beta and gamma/delta heterodimers, forms the T-cell receptor-CD3 complex. This complex plays an important role in coupling antigen recognition to several intracellular signal-transduction pathways. The genes encoding the epsilon, gamma and delta polypeptides are located in the same cluster on chromosome 11. Defects in this gene are associated with T cell immunodeficiency.

Recommended Dilutions

WB	1:1000 - 1:5000
FC	1:500 - 1:1000

Immunogen Information

Gene ID

916/917

Swiss Prot

P07766/P09693

Immunogen

Recombinant fusion protein containing a sequence corresponding to amino acids 1-207(CD3E)& 1-182(CD3G) of human CD3 epsilon&CD3 gamma Heterodimer.

Synonyms

CD3E; IMD18; T3E; TCRE; CD3e molecule; CD3G; CD3-GAMMA; IMD17; T3G; CD3E+CD3G

Contact



www.abclonal.com

Product Information

Source

Rabbit

Isotype

IgG

Purification

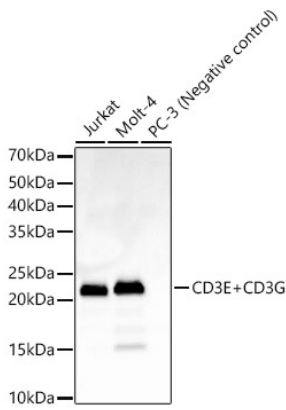
Affinity purification

Storage

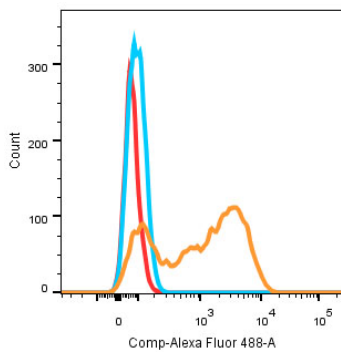
Store at -20°C. Avoid freeze / thaw cycles.

Buffer: PBS with 0.05% proclin300,0.05% BSA,50% glycerol,pH7.3.

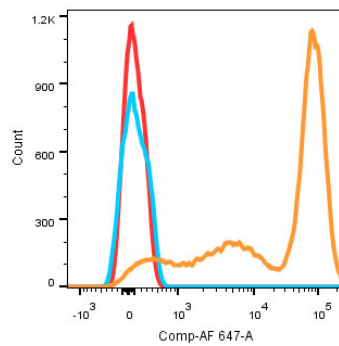
Validation Data



Western blot analysis of various lysates, using CD3E+CD3G Rabbit mAb (A20213) at 1:2000 dilution.
Secondary antibody: HRP Goat Anti-Rabbit IgG (H+L) (AS014) at 1:10000 dilution.
Lysates/proteins: 25µg per lane.
Blocking buffer: 3% nonfat dry milk in TBST.
Detection: ECL Basic Kit (RM00020).
Exposure time: 60s.



Flow cytometric analysis of CD3E+CD3G Rabbit mAb (A20213) (1µg/mL) in Jurkats cells (orange) compared to rabbit IgG Isotype control (blue) and non-staining control (Red).



Human peripheral blood lymphocytes stained with CD3E+CD3G Rabbit mAb (A20213) (1µg/mL) (orange). Secondary antibody only staining (Blue) and unstained sample (red) were used as a control.