

# SARS-CoV-2 Spike Rabbit pAb

Catalog No.: A20137 **1 Publications**

## Basic Information

### Observed MW

110kDa/180kDa

### Calculated MW

141kDa

### Category

Primary antibody

### Applications

ELISA,DB,WB,IF/ICC,IP

### Cross-Reactivity

SARS-CoV-2

## Background

Severe acute respiratory syndrome coronavirus 2 (SARS-CoV-2) is an enveloped, positive-sense, single-stranded RNA virus that causes coronavirus disease 2019 (COVID-19). Virus particles include the RNA genetic material and structural proteins needed for invasion of host cells. Once inside the cell the infecting RNA is used to encode structural proteins that make up virus particles, nonstructural proteins that direct virus assembly, transcription, replication and host control and accessory proteins whose function has not been determined.~ The structural proteins of SARS-CoV-2 include the envelope protein (E), spike or surface glycoprotein (S), membrane protein (M) and the nucleocapsid protein (N). The spike glycoprotein is found on the outside of the virus particle and gives coronavirus viruses their crown-like appearance. This glycoprotein mediates attachment of the virus particle and entry into the host cell. S protein is an important target for vaccine development, antibody therapies and diagnostic antigen-based tests.

## Recommended Dilutions

<b>DB</b>	1:500 - 1:2000
<b>WB</b>	1:500 - 1:1000
<b>IF/ICC</b>	1:50 - 1:200
<b>IP</b>	1:500 - 1:1000

## Immunogen Information

### Gene ID

43740568

### Swiss Prot

P0DTC2

### Immunogen

A synthetic peptide corresponding to a sequence within amino acids 600-700 of coronavirus Spike (YP\_009724390.1).

### Synonyms

spike glycoprotein; SARS-CoV-2 Spike

## Contact

 | [www.abclonal.com](http://www.abclonal.com)

## Product Information

### Source

Rabbit

### Isotype

IgG

### Purification

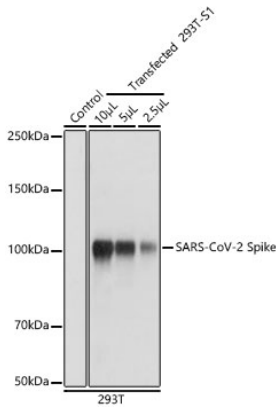
Affinity purification

### Storage

Store at -20°C. Avoid freeze / thaw cycles.

Buffer: PBS with 0.05% proclin300,50% glycerol,pH7.3.

## Validation Data



Western blot analysis of extracts of 293T and transfected 293T-S1 (His-tag), using SARS-CoV-2 Spike antibody (A20137) at 1:1000 dilution.

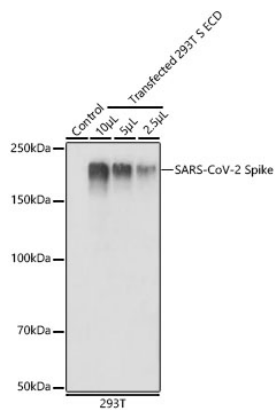
Secondary antibody: HRP Goat Anti-Rabbit IgG (H+L) (AS014) at 1:10000 dilution.

Lysates/proteins: 25µg per lane.

Blocking buffer: 3% nonfat dry milk in TBST.

Detection: ECL Basic Kit (RM00020).

Exposure time: 1s.



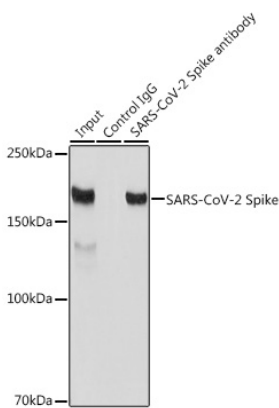
Western blot analysis of extracts of 293T and transfected 293T-S ECD (His-tag), using SARS-CoV-2 Spike antibody (A20137) at 1:1000 dilution.

Lysates/proteins: 25µg per lane.

Blocking buffer: 3% nonfat dry milk in TBST.

Detection: ECL Basic Kit (RM00020).

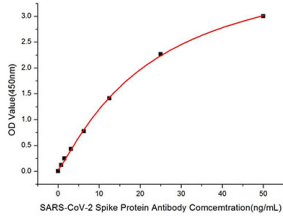
Exposure time: 1s.



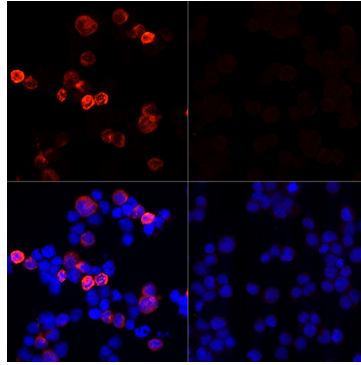
Immunoprecipitation analysis of 300 µg extracts of 293T cells using 3 µg SARS-CoV-2 Spike antibody (A20137). Western blot was performed from the immunoprecipitate using SARS-CoV-2 Spike antibody (A20137) at a dilution of 1:1000.

## Validation Data

---



Immobilized Recombinant SARS-COV-2 S1+S2 ECD(S-ECD) Protein (RP01283) at 1µg/mL (100µL/well) can bind SARS-CoV-2 Spike Rabbit pAb (A20137) with a linear range of 0.78-50ng/mL.



Immunofluorescence analysis of 293T cells transfected with SARS-CoV-2 Spike protein and untreated 293T cells use SARS-CoV-2 Spike Rabbit pAb (A20137) at dilution of 1:100 (40x lens). Blue: DAPI for nuclear staining.