

A19956

Leader in Biomolecular Solutions for Life Science



## [KO Validated] PLS3 Rabbit pAb

Catalog No.: A19956 **KO Validated**

### Basic Information

#### Observed MW

68kDa

#### Calculated MW

71kDa

#### Category

Polyclonal Antibody

#### Applications

WB,IP,ELISA

#### Cross-Reactivity

Human,Mouse,Rat

### Background

Plastins are a family of actin-binding proteins that are conserved throughout eukaryote evolution and expressed in most tissues of higher eukaryotes. In humans, two ubiquitous plastin isoforms (L and T) have been identified. Plastin 1 (otherwise known as Fimbrin) is a third distinct plastin isoform which is specifically expressed at high levels in the small intestine. The L isoform is expressed only in hemopoietic cell lineages, while the T isoform has been found in all other normal cells of solid tissues that have replicative potential (fibroblasts, endothelial cells, epithelial cells, melanocytes, etc.). The C-terminal 570 amino acids of the T-plastin and L-plastin proteins are 83% identical. It contains a potential calcium-binding site near the N terminus. Alternate splicing results in multiple transcript variants.

### Recommended Dilutions

WB	1:200 - 1:2000
IP	1:50 - 1:100

### Immunogen Information

<b>Gene ID</b>	<b>Swiss Prot</b>
5358	P13797

#### Immunogen

Recombinant fusion protein containing a sequence corresponding to amino acids 1-240 of human PLS3 (NP\_005023.2).

#### Synonyms

BMND18; T-plastin; S3

### Contact

 [www.abclonal.com](http://www.abclonal.com)

### Product Information

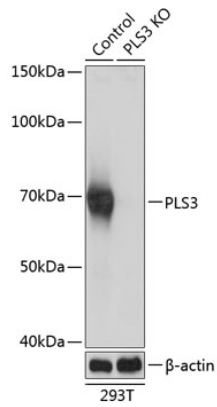
<b>Source</b>	<b>Isotype</b>	<b>Purification</b>
Rabbit	IgG	Affinity purification

#### Storage

Store at -20°C. Avoid freeze / thaw cycles.  
Buffer: PBS with 0.01% thimerosal, 50% glycerol, pH7.3.

## Validation Data

---



Western blot analysis of lysates from wild type (WT) and PLS3 knockout (KO) 293T cells, using [KO Validated] PLS3 Rabbit pAb (A19956) at 1:1000 dilution.  
Secondary antibody: HRP Goat Anti-Rabbit IgG (H+L) (AS014) at 1:10000 dilution.  
Lysates/proteins: 25µg per lane.  
Blocking buffer: 3% nonfat dry milk in TBST.  
Detection: ECL Basic Kit (RM00020).  
Exposure time: 1s.