

A19873

Leader in Biomolecular Solutions for Life Science



[KO Validated] PSME4 Rabbit pAb

Catalog No.: A19873 **KO Validated**

Basic Information

Observed MW

211kDa

Calculated MW

211kDa

Category

Polyclonal Antibody

Applications

WB,ELISA

Cross-Reactivity

Human,Mouse,Rat

Background

Predicted to enable lysine-acetylated histone binding activity; peptidase activator activity; and proteasome binding activity. Predicted to be involved in DNA repair; proteasomal ubiquitin-independent protein catabolic process; and spermatogenesis, exchange of chromosomal proteins. Located in nucleoplasm.

Recommended Dilutions

WB 1:500 - 1:2000

Immunogen Information

Gene ID

23198

Swiss Prot

Q14997

Immunogen

Recombinant fusion protein containing a sequence corresponding to amino acids 1634-1843 of human PSME4 (NP_055429.2).

Synonyms

PA200; E4

Contact

 www.abclonal.com

Product Information

Source

Rabbit

Isotype

IgG

Purification

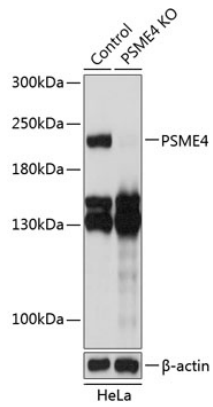
Affinity purification

Storage

Store at -20°C. Avoid freeze / thaw cycles.

Buffer: PBS with 0.01% thimerosal,50% glycerol,pH7.3.

Validation Data



Western blot analysis of lysates from wild type (WT) and PSME4 knockout (KO) HeLa cells, using [KO Validated] PSME4 Rabbit pAb (A19873) at 1:3000 dilution. Secondary antibody: HRP Goat Anti-Rabbit IgG (H+L) (AS014) at 1:10000 dilution. Lysates/proteins: 25µg per lane. Blocking buffer: 3% nonfat dry milk in TBST. Detection: ECL Basic Kit (RM00020). Exposure time: 1s.