

A19843

Leader in Biomolecular Solutions for Life Science



[KO Validated] Lrwd1 Rabbit pAb

Catalog No.: A19843 **KO Validated**

Basic Information

Observed MW

71kDa

Calculated MW

71kDa

Category

Polyclonal Antibody

Applications

WB, ELISA

Cross-Reactivity

Human, Mouse, Rat

Background

The protein encoded by this gene interacts with components of the origin recognition complex (ORC) and regulates the formation of the prereplicative complex. The encoded protein stabilizes the ORC and therefore aids in DNA replication. This protein is required for the G1/S phase transition of the cell cycle. In addition, the encoded protein binds to trimethylated histone H3 in heterochromatin and recruits the ORC and lysine methyltransferases, which help maintain the repressive heterochromatic state. Two transcript variants encoding different isoforms have been found for this gene.

Recommended Dilutions

WB 1:200 - 1:2000

Immunogen Information

Gene ID

222229

Swiss Prot

Q9UFC0

Immunogen

A synthetic peptide corresponding to a sequence within amino acids 250-350 of human Lrwd1 (NP_690852.1).

Synonyms

ORCA; CENP-33; d1

Contact



www.abclonal.com

Product Information

Source

Rabbit

Isotype

IgG

Purification

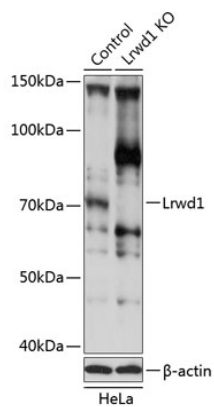
Affinity purification

Storage

Store at -20°C. Avoid freeze / thaw cycles.

Buffer: PBS with 0.01% thimerosal, 50% glycerol, pH 7.3.

Validation Data



Western blot analysis of lysates from wild type (WT) and Lrwd1 knockout (KO) HeLa cells, using [KO Validated] Lrwd1 Rabbit pAb (A19843) at 1:1000 dilution.
Secondary antibody: HRP Goat Anti-Rabbit IgG (H+L) (AS014) at 1:10000 dilution.
Lysates/proteins: 25 μ g per lane.
Blocking buffer: 3% nonfat dry milk in TBST.
Detection: ECL Basic Kit (RM00020).
Exposure time: 10s.