

A19731

Leader in Biomolecular Solutions for Life Science



## CDC42EP1 Rabbit mAb

Catalog No.: A19731 **Recombinant**

### Basic Information

---

**Observed MW**

60kDa

**Calculated MW**

40kDa

**Category**

SMab Recombinant Monoclonal Antibody

**Applications**

WB,IHC-P,ELISA

**Cross-Reactivity**

Human,Mouse,Rat

**CloneNo number**

ARC2298

### Background

---

CDC42 is a member of the Rho GTPase family that regulates multiple cellular activities, including actin polymerization. The protein encoded by this gene is a CDC42 binding protein that mediates actin cytoskeleton reorganization at the plasma membrane. This protein is secreted and is primarily found in bone marrow.

### Recommended Dilutions

---

**WB** 1:500 - 1:2000

**IHC-P** 1:50 - 1:200

### Immunogen Information

---

**Gene ID**

11135

**Swiss Prot**

Q00587

**Immunogen**

A synthetic peptide corresponding to a sequence within amino acids 292-391 of human CDC42EP1 (Q00587).

**Synonyms**

CEP1; BORG5; MSE55; CDC42EP1

### Contact

---



[www.abclonal.com](http://www.abclonal.com)

### Product Information

---

**Source**

Rabbit

**Isotype**

IgG

**Purification**

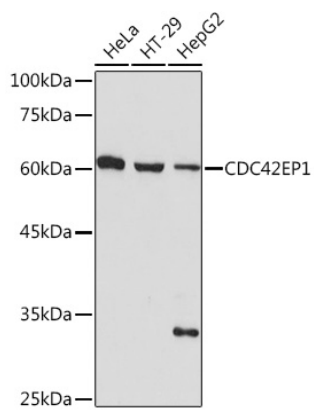
Affinity purification

**Storage**

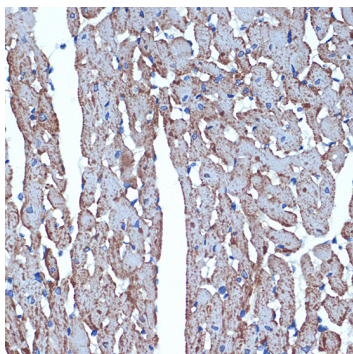
Store at -20°C. Avoid freeze / thaw cycles.

Buffer: PBS with 0.02% sodium azide,0.05% BSA,50% glycerol,pH7.3.

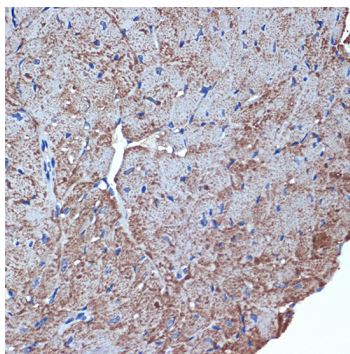
## Validation Data



Western blot analysis of various lysates using CDC42EP1 Rabbit mAb (A19731) at 1:1000 dilution. Secondary antibody: HRP Goat Anti-Rabbit IgG (H+L) (AS014) at 1:10000 dilution. Lysates/proteins: 25µg per lane. Blocking buffer: 3% nonfat dry milk in TBST. Detection: ECL Basic Kit (RM00020). Exposure time: 180s.



Immunohistochemistry analysis of paraffin-embedded rat heart using CDC42EP1 Rabbit mAb (A19731) at dilution of 1:100 (40x lens). Perform microwave antigen retrieval with 10 mM Tris/EDTA buffer pH 9.0 before commencing with IHC staining protocol.



Immunohistochemistry analysis of paraffin-embedded mouse heart using CDC42EP1 Rabbit mAb (A19731) at dilution of 1:100 (40x lens). Perform microwave antigen retrieval with 10 mM Tris/EDTA buffer pH 9.0 before commencing with IHC staining protocol.