

# [KO Validated] SQSTM1/p62 Rabbit mAb

Catalog No.: A19700 **KO Validated** **Recombinant** **13 Publications**

## Basic Information

### Catalog No.

A19700

### Observed MW

62KDa

### Calculated MW

62kDa

### Category

Primary antibody

### Applications

WB,IHC,IF,IP

### Cross-Reactivity

Human, Mouse, Rat

## Recommended Dilutions

<b>WB</b>	1:500 - 1:2000
<b>IHC</b>	1:50 - 1:200
<b>IF</b>	1:50 - 1:200
<b>IP</b>	1:50 - 1:200

## Contact

 | [www.abclonal.com](http://www.abclonal.com)

## Background

This gene encodes a multifunctional protein that binds ubiquitin and regulates activation of the nuclear factor kappa-B (NF- $\kappa$ B) signaling pathway. The protein functions as a scaffolding/adaptor protein in concert with TNF receptor-associated factor 6 to mediate activation of NF- $\kappa$ B in response to upstream signals. Alternatively spliced transcript variants encoding either the same or different isoforms have been identified for this gene. Mutations in this gene result in sporadic and familial Paget disease of bone.

## Immunogen Information

<b>Gene ID</b>	<b>Swiss Prot</b>
8878	Q13501

### Immunogen

A synthetic peptide corresponding to a sequence within amino acids 341-440 of human SQSTM1/p62 (Q13501).

### Synonyms

SQSTM1;A170;DMRV;FTDALS3;NADGP;OSIL;PDB3;ZIP3;p60;p62;p62B

## Product Information

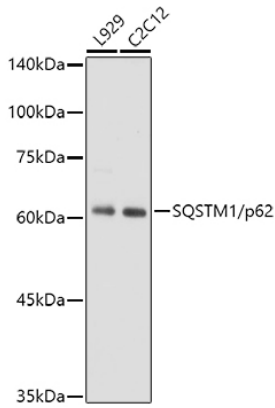
<b>Source</b>	<b>Isotype</b>	<b>Purification</b>
Rabbit	IgG	Affinity purification

### Storage

Store at -20°C. Avoid freeze / thaw cycles.

Buffer: PBS with 0.02% sodium azide,0.05% BSA,50% glycerol,pH7.3.

## Validation Data



Western blot analysis of extracts of various cell lines, using SQSTM1/p62 antibody (A19700) at 1:1000 dilution.

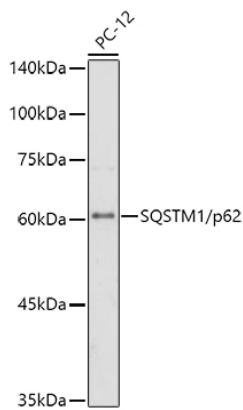
Secondary antibody: HRP Goat Anti-Rabbit IgG (H+L) (AS014) at 1:10000 dilution.

Lysates/proteins: 25ug per lane.

Blocking buffer: 3% nonfat dry milk in TBST.

Detection: ECL Basic Kit (RM00020).

Exposure time: 1s.



Western blot analysis of extracts of PC-12 cells, using SQSTM1/p62 antibody (A19700) at 1:1000 dilution.

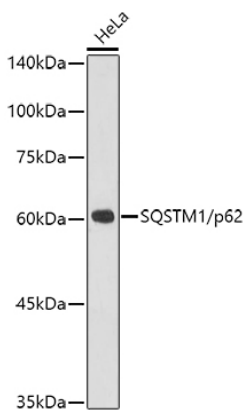
Secondary antibody: HRP Goat Anti-Rabbit IgG (H+L) (AS014) at 1:10000 dilution.

Lysates/proteins: 25ug per lane.

Blocking buffer: 3% nonfat dry milk in TBST.

Detection: ECL Basic Kit (RM00020).

Exposure time: 30s.



Western blot analysis of extracts of HeLa cells, using SQSTM1/p62 antibody (A19700) at 1:1000 dilution.

Secondary antibody: HRP Goat Anti-Rabbit IgG (H+L) (AS014) at 1:10000 dilution.

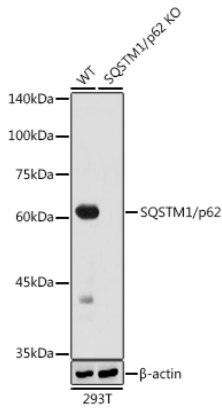
Lysates/proteins: 25ug per lane.

Blocking buffer: 3% nonfat dry milk in TBST.

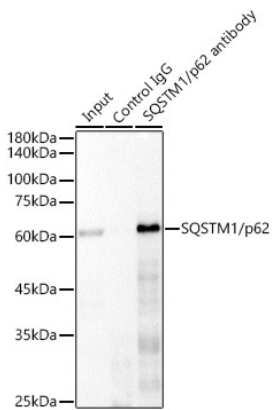
Detection: ECL Basic Kit (RM00020).

Exposure time: 180s.

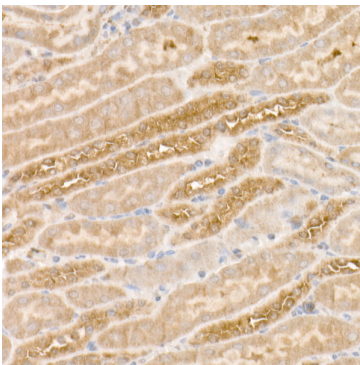
## Validation Data



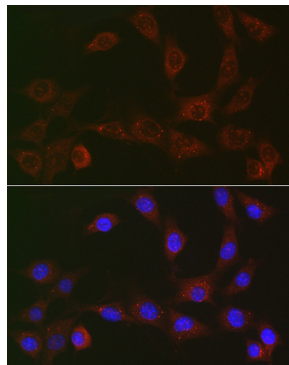
Western blot analysis of extracts from wild type (WT) and SQSTM1/p62 knockout (KO) 293T cells, using SQSTM1/p62 antibody (A19700) at 1:1000 dilution.  
Secondary antibody: HRP Goat Anti-Rabbit IgG (H+L) (AS014) at 1:10000 dilution.  
Lysates/proteins: 25ug per lane.  
Blocking buffer: 3% nonfat dry milk in TBST.  
Detection: ECL Basic Kit (RM00020).  
Exposure time: 1s.



Immunoprecipitation analysis of 300ug extracts of 293T cells using 3ug SQSTM1/p62 antibody (A19700). Western blot was performed from the immunoprecipitate using SQSTM1/p62 antibody (A19700) at a dilution of 1:1000.



Immunohistochemistry of paraffin-embedded human colon carcinoma using [KO Validated] SQSTM1/p62 Rabbit mAb (A19700) at dilution of 1:100 (40x lens). Perform high pressure antigen retrieval with 10 mM citrate buffer pH 6.0 before commencing with IHC staining protocol.



Immunofluorescence analysis of NIH/3T3 cells using [KO Validated] SQSTM1/p62 Rabbit mAb (A19700) at dilution of 1:50 (40x lens). Blue: DAPI for nuclear staining.